

DATABASE MANAGEMENT & GLOBAL FITPRO OPTIONS

RESFT 303

Created by: John Morton



Course Description

- + Creating and changing the FitPro Active Database
- + Define the Merge, Copy, and Split functions
- + Discuss how to transfer a FitPro database from one PC to another PC
- + Overview of the Global FitPro Option screen
- + Followed by a Q & A session



Course Key

Left Click



Right Click



Recommended Material

1. Personal Computer (PC) with FitPro Fit Test software v2.0 (or greater) installed
2. USB Flash Drive*



** provided with PortaCount Pro/Pro+*

Let's begin...

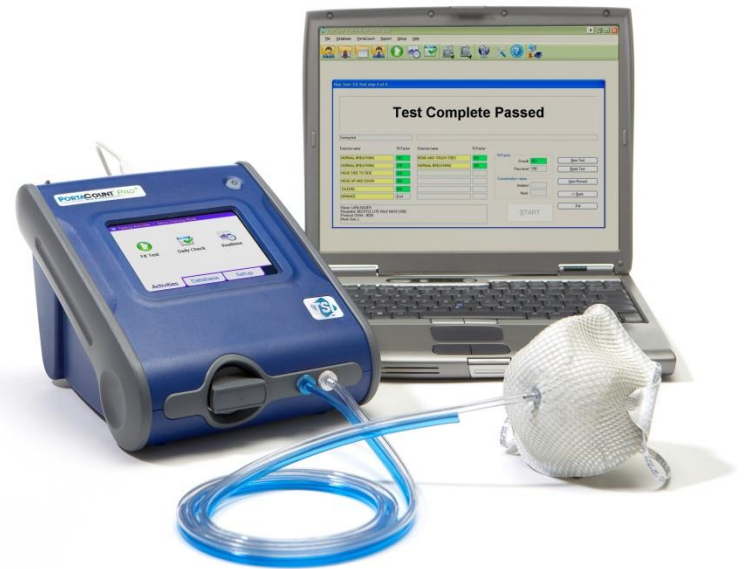


1. Power on the PC with the FitPro Fit Test Software already installed
2. Attach the USB Flash Drive to the PC



Creating & Changing an Active Database

FitPro Fit Test Software



Open the FitPro Software

2 ways to accomplish this:

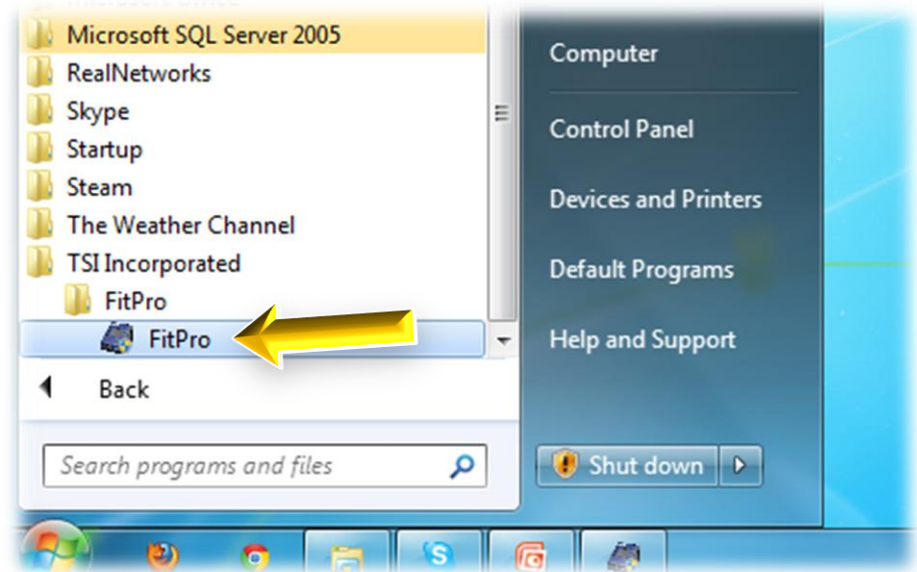
1. Double-Click the **FitPro** icon

- Located on desktop

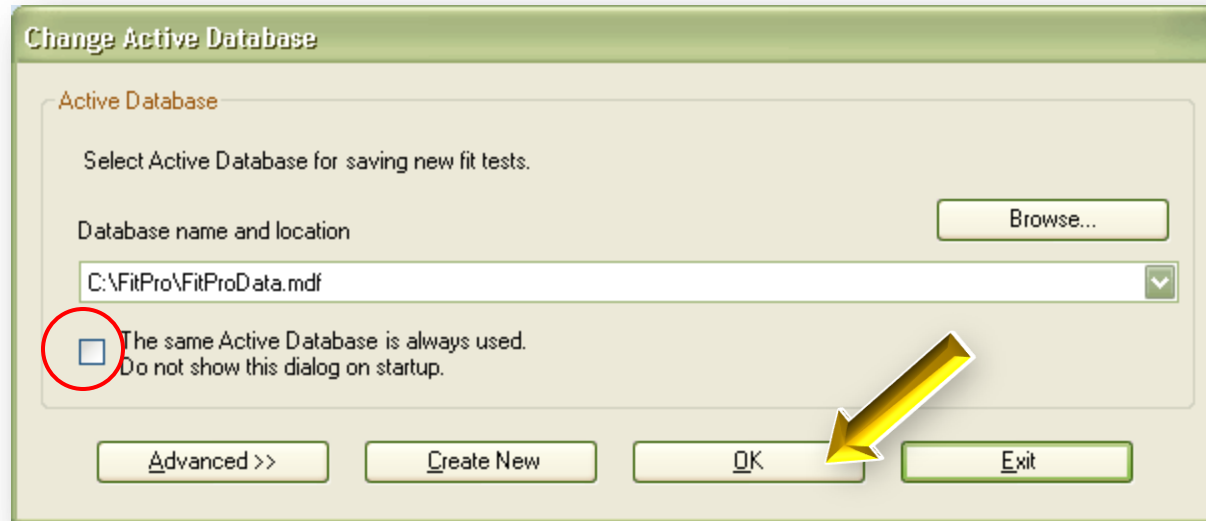
-or-

2. Open your **Start** menu, go to:

All Programs ► TSI Incorporated ► FitPro ► FitPro_V2.0.x



Change Active Database



This window appears when the “Same Active Database is always used” function has not been checked



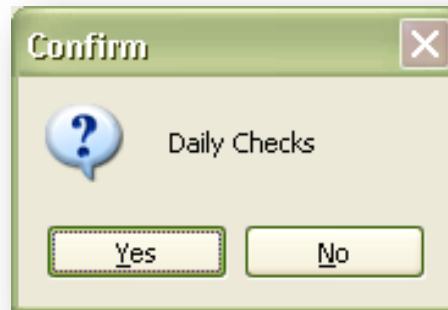
If you always use the same FitPro database you may want to check this box as a convenience



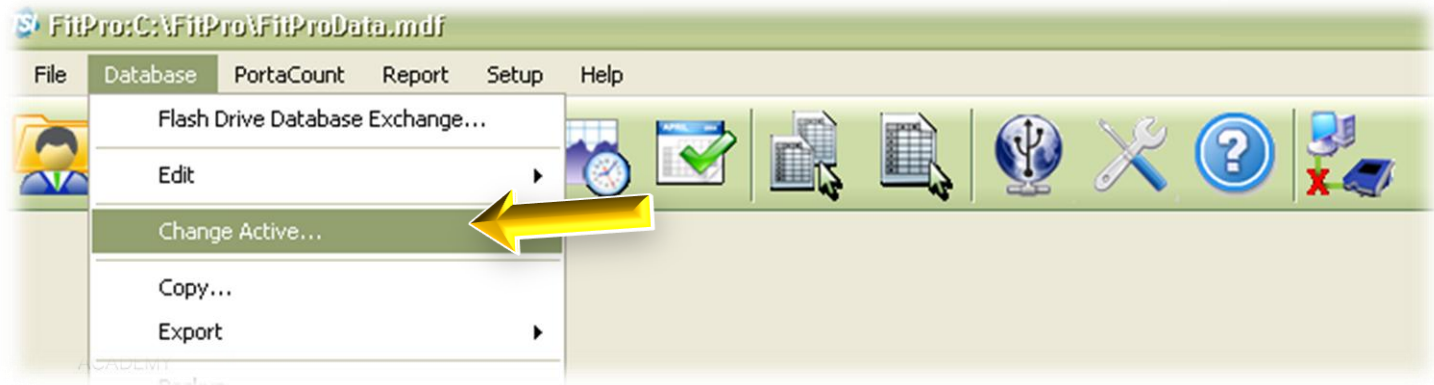
+ Click **OK**

Change Active...

+ Select **No** when the Daily Checks prompt appears



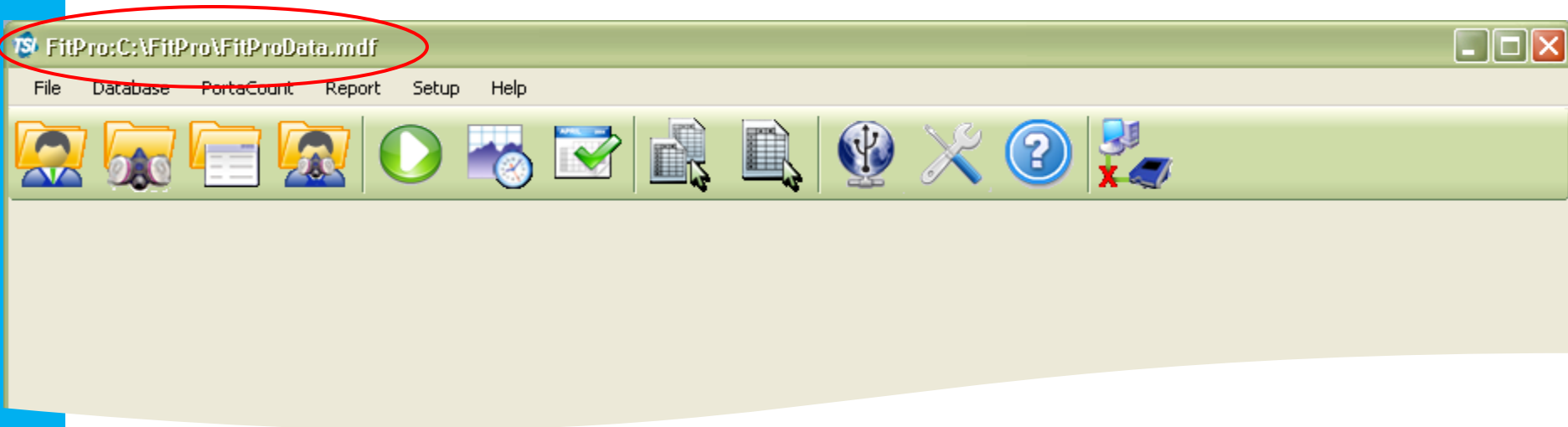
- Click **Database** ► **Change Active...**



Did you know?

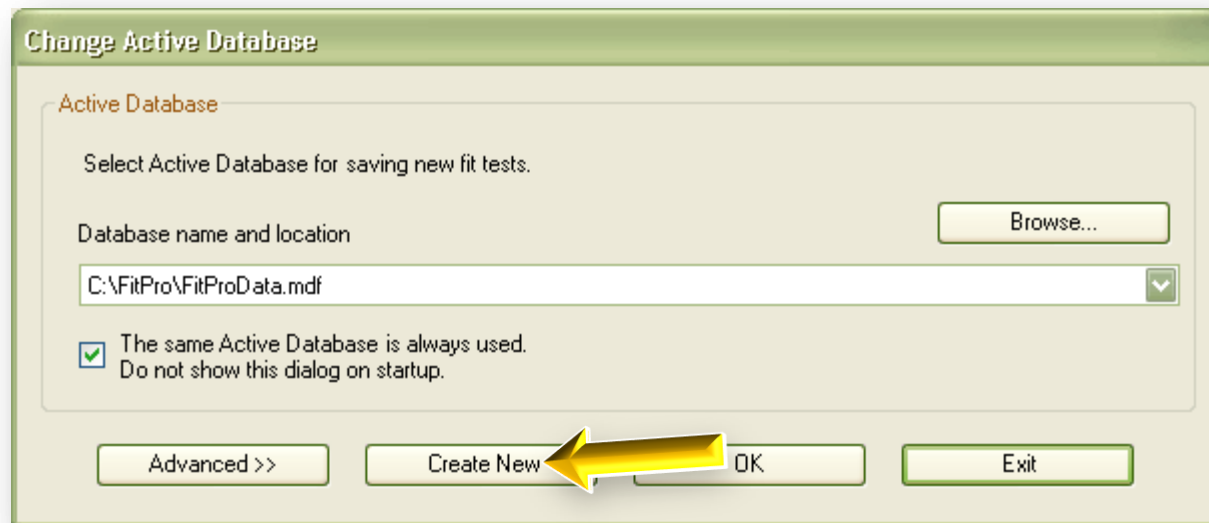


The current Active Database is listed across the top of the FitPro software application

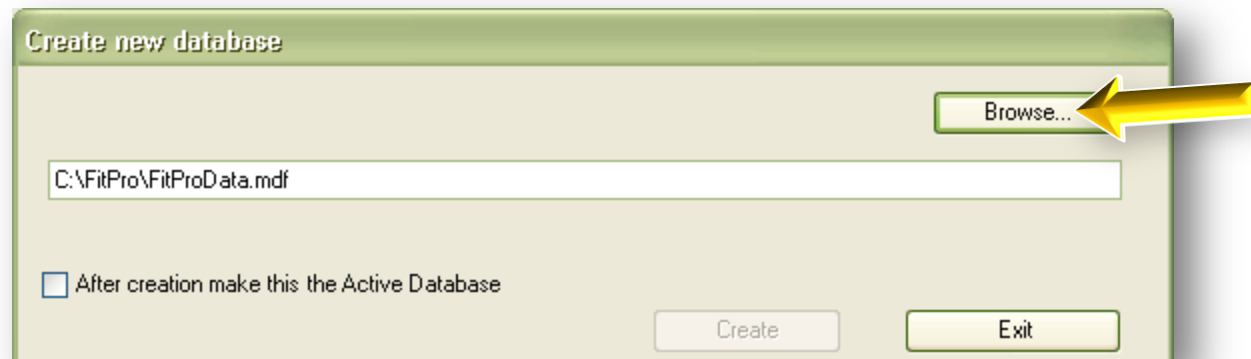


Create a Database

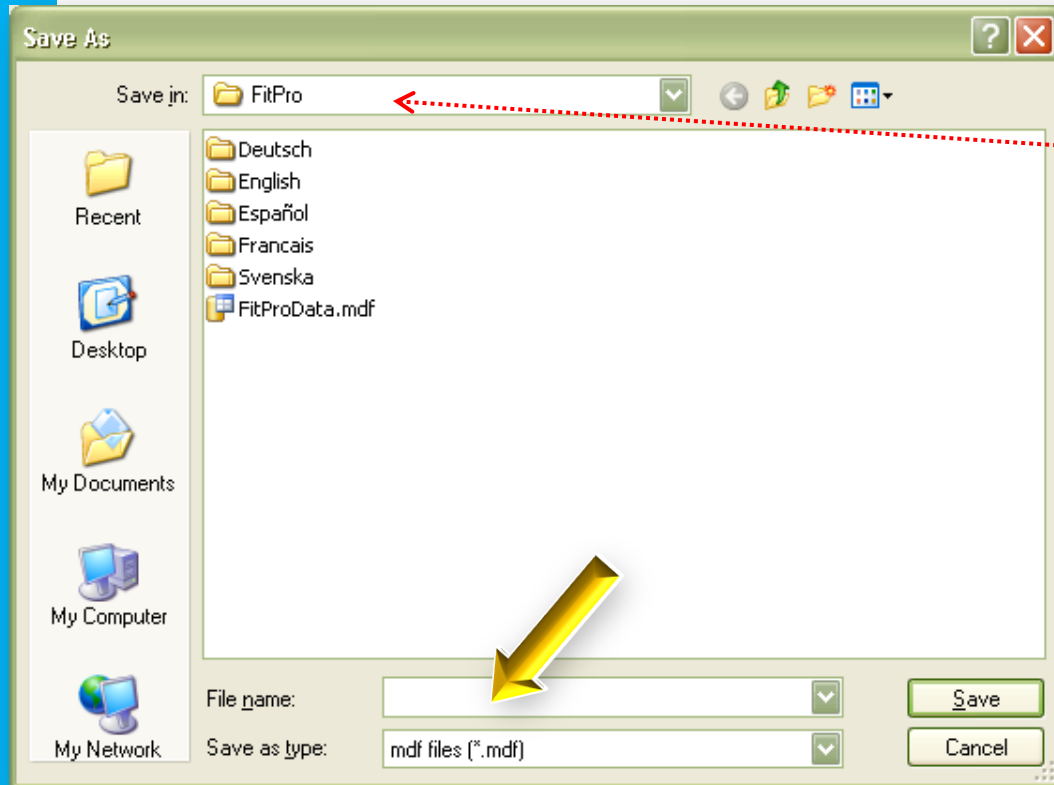
+ Click **Create New**



+ Click **Browse...**



Save As

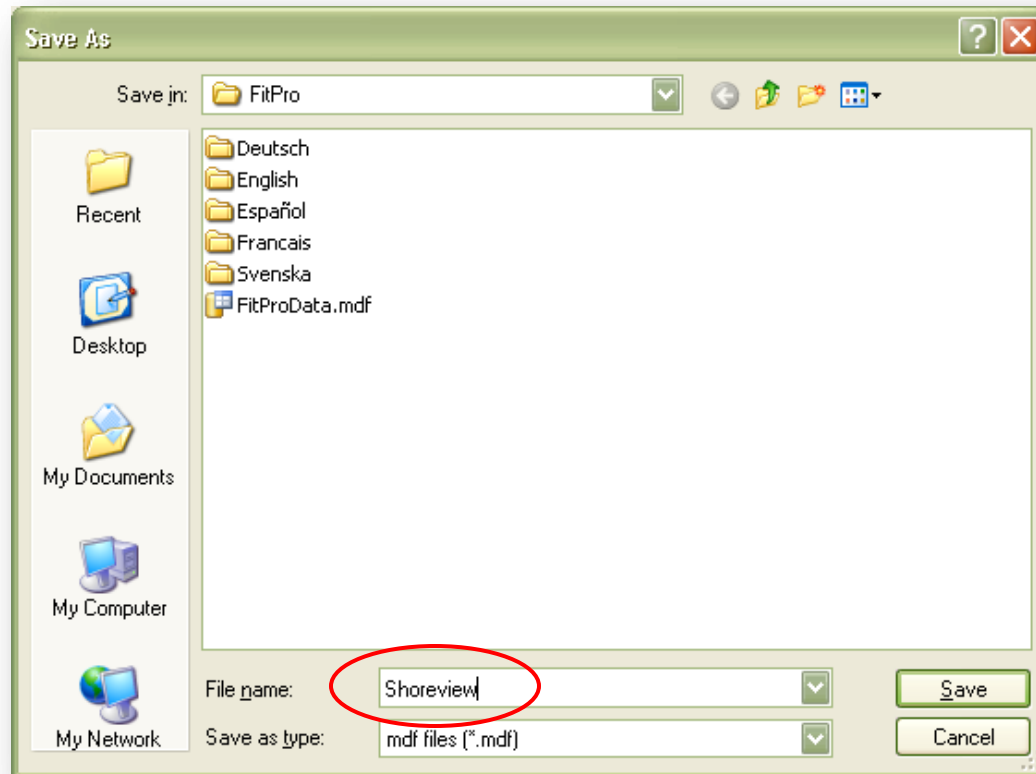


Note where the database is being saved to

+ Click in the **File Name** field



Save As



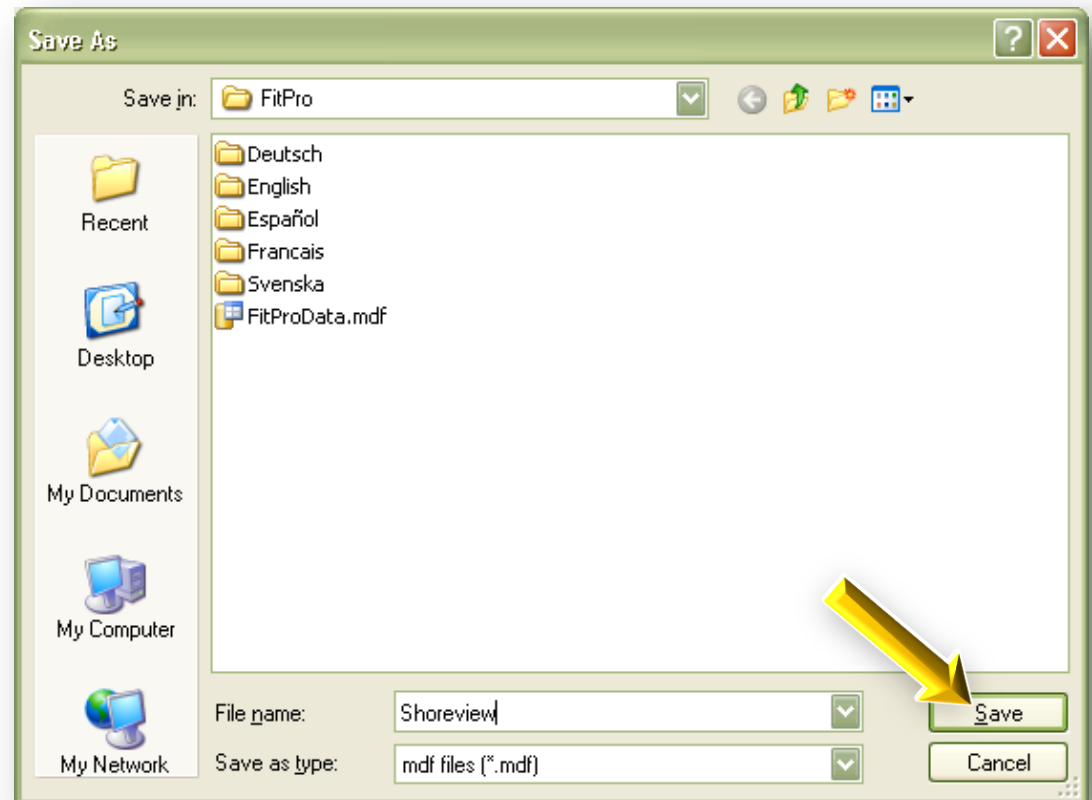
+ Type in “Shoreview”



Save As

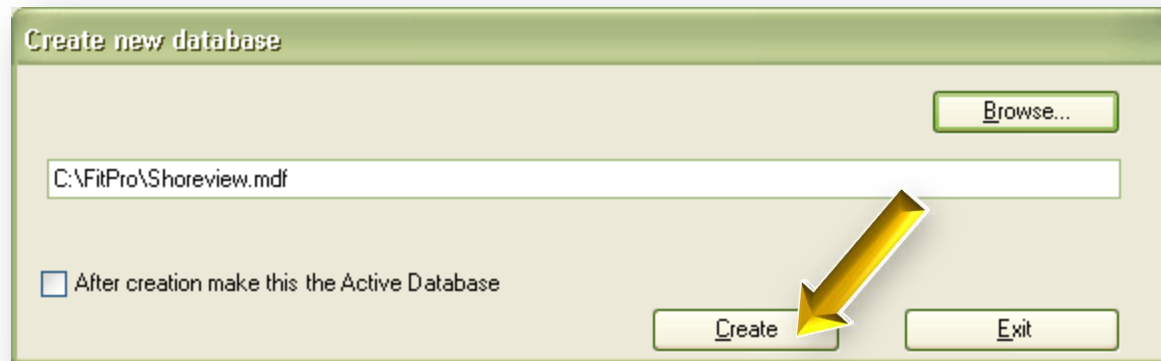
It can be useful to create new databases for separate locations or different years

+ Click Save

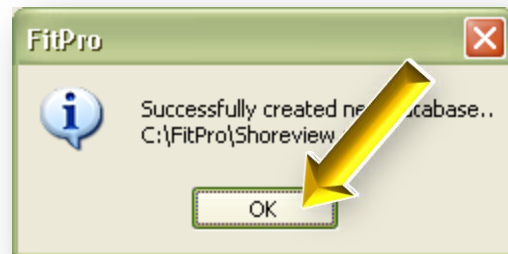


Create a Database

+ Click **Create**

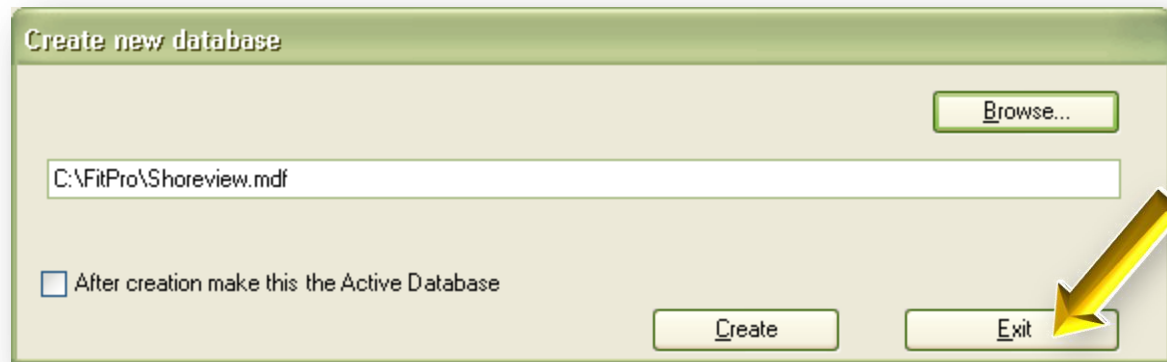


+ Click **OK**



Change Active Database

+ Click **Exit**

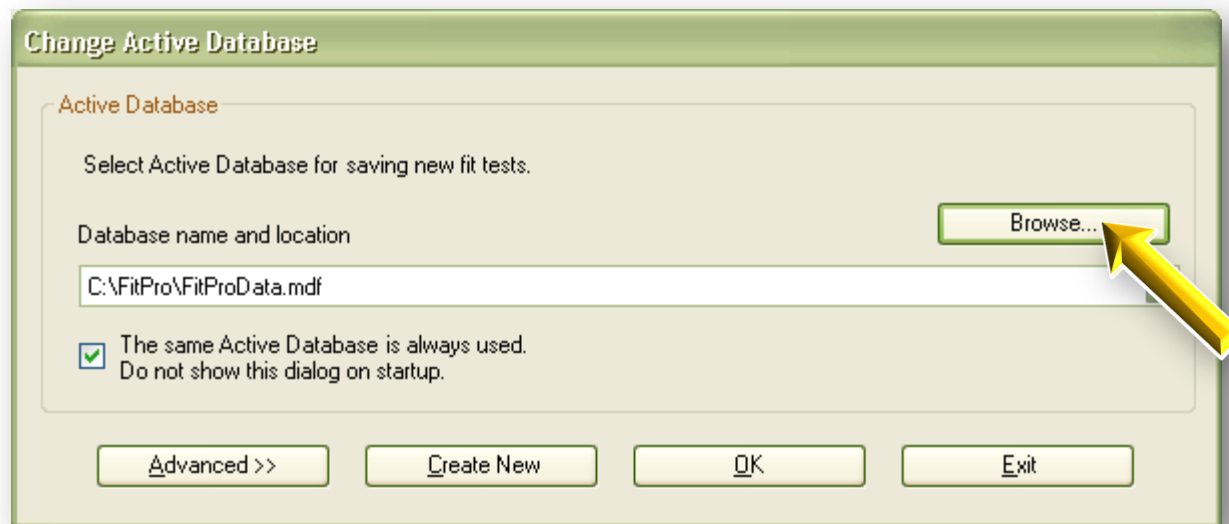


**You have just created a
new FitPro Database**

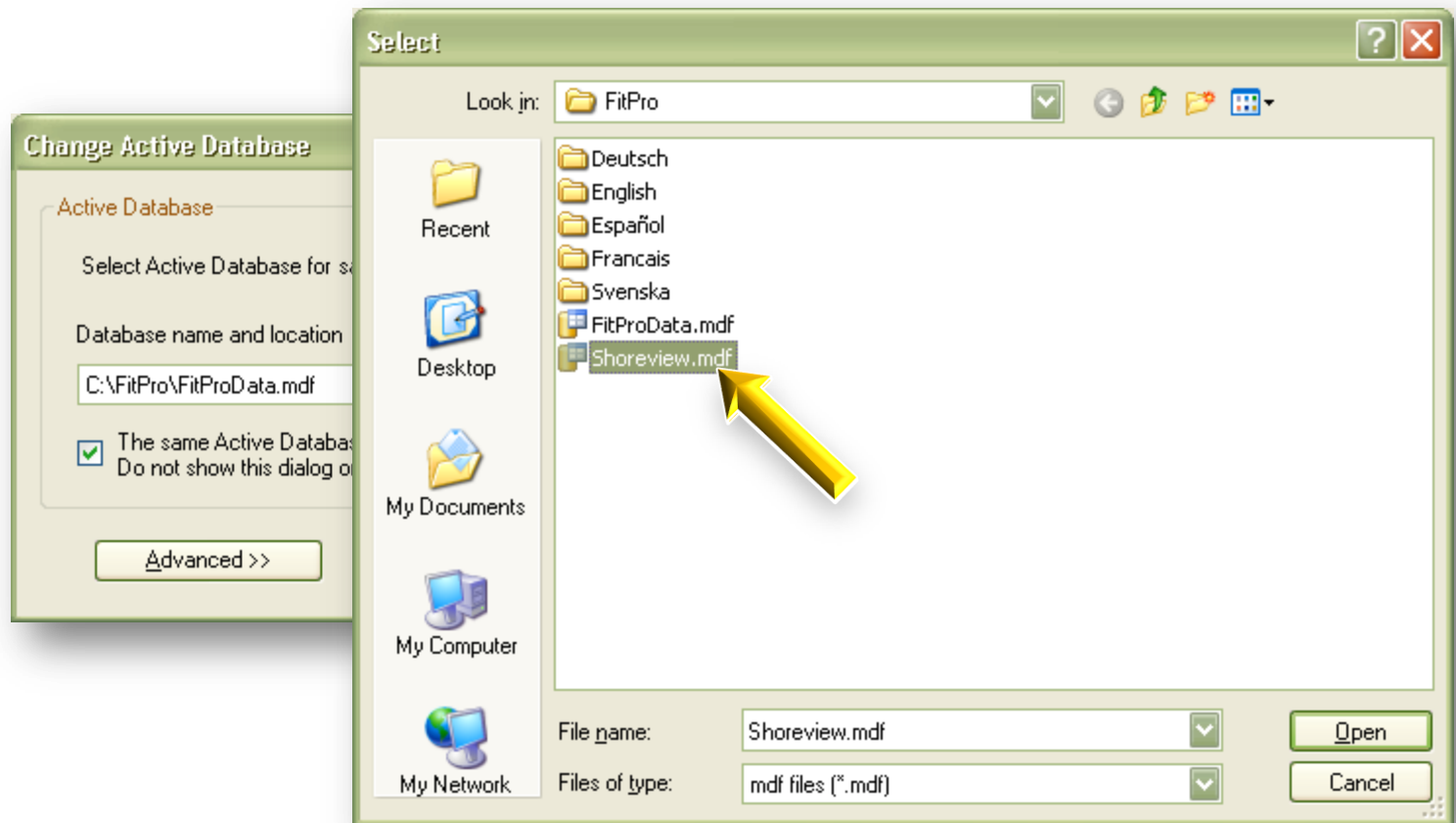


Change Active Database

- Click **Browse**

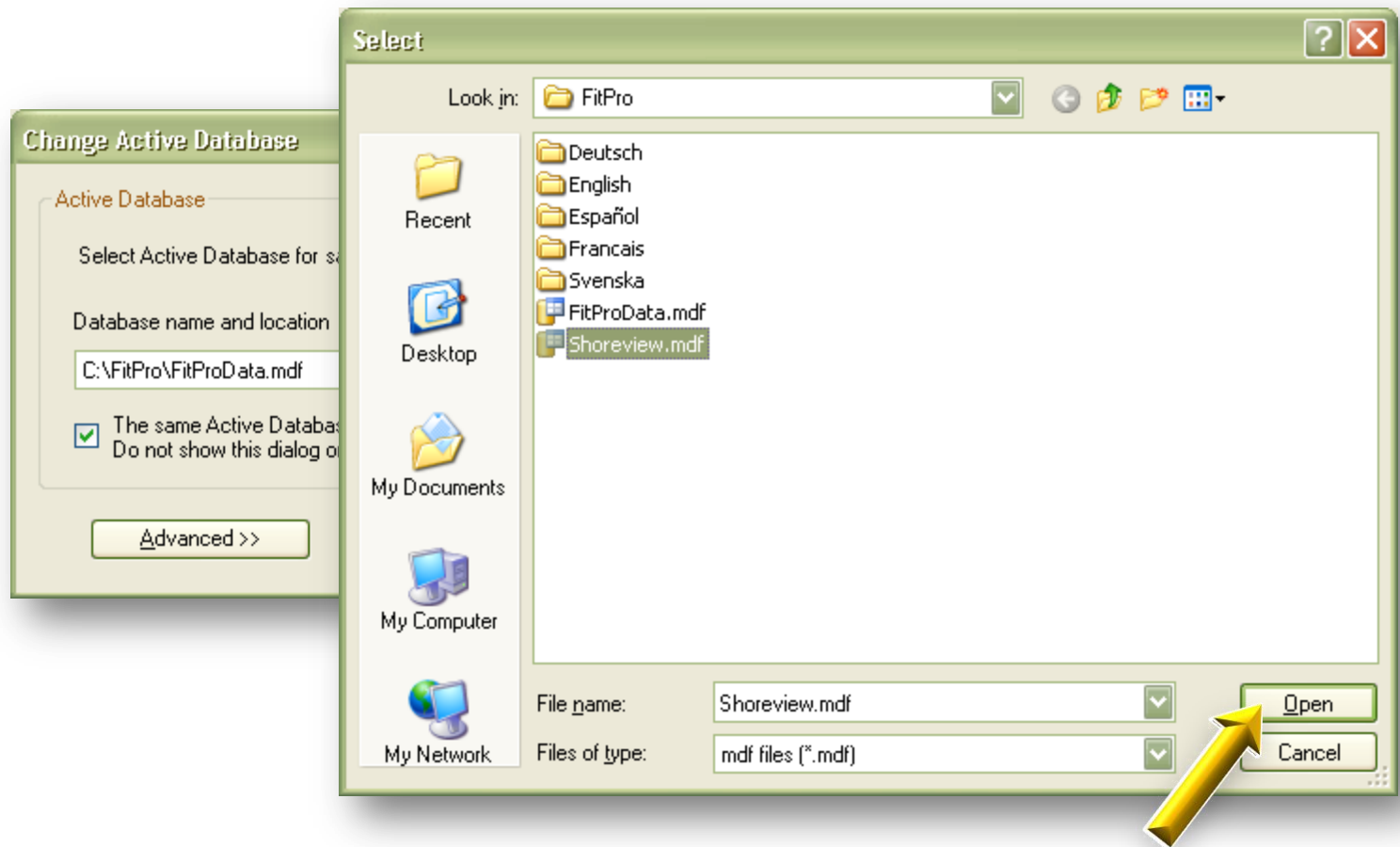


Change Active Database



+ Select "Shoreview"

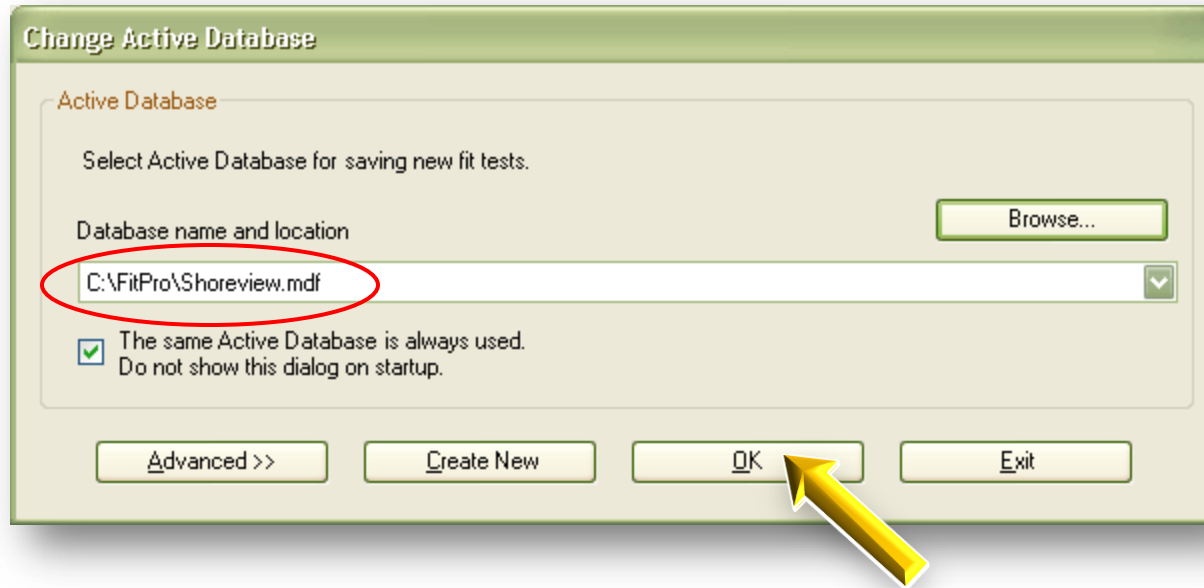
Change Active Database



+ Click Open



Change Active Database



+ Click **OK**

Change Active Database



**You have just changed the
Active FitPro Database**

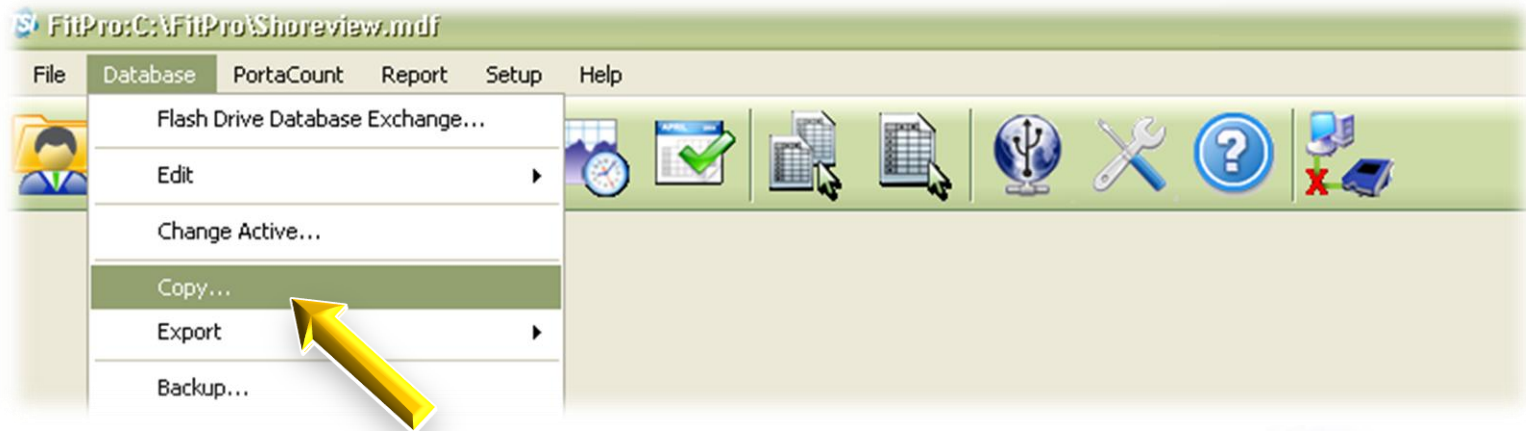


Copy - Split - Merge

FitPro Fit Test Software



Copy a Database



+ Click **Database** ► **Copy...**



Make a Copy of a Database

Make a copy of a database

Select a Source Database which will be copied to a Destination Database.
If the Destination Database does not exist a new one will be created.

Source Database Browse...

C:\FitPro\Shoreview.mdf

Destination Database Browse...

C:\FitPro\CopyOf_Shoreview.mdf

☐ Copy the SELECTED data from Source Database

- ☐ Copy FitTest Table data
- ☐ Copy the People Table data
- ☐ Copy the Respirator Table data
- ☐ Copy the Protocol Table data
- ☐ Copy Daily Check Table

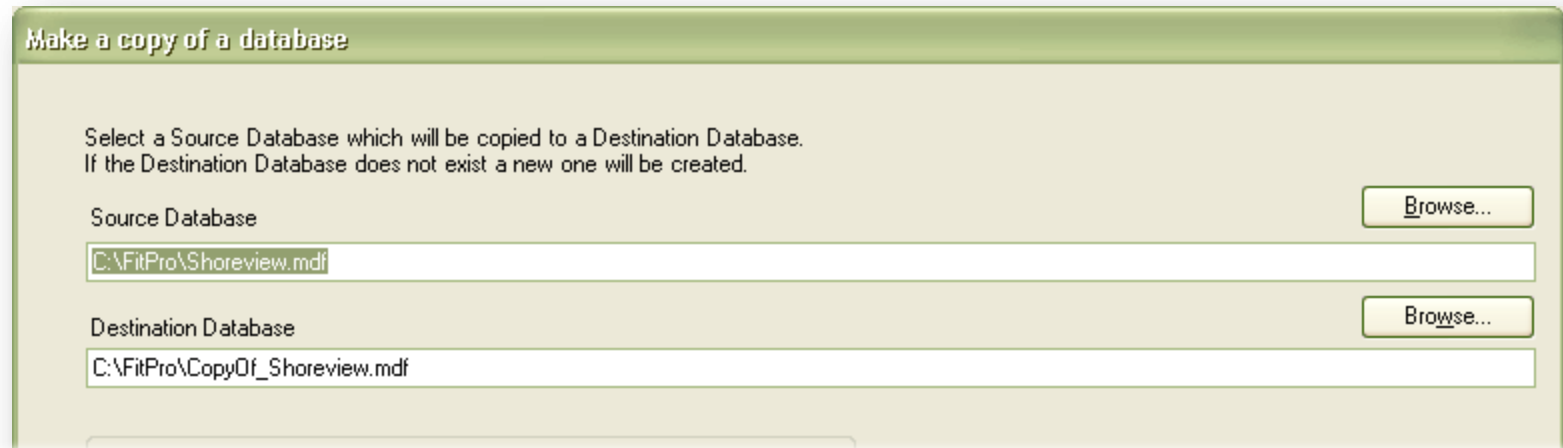
☒ Copy ALL data from Source Database

☐ Copy NO data (Format only) from Source Database.

Copy Exit



Make a Copy of a Database



1. SELECT A SOURCE DATABASE

- **CLICK BROWSE**

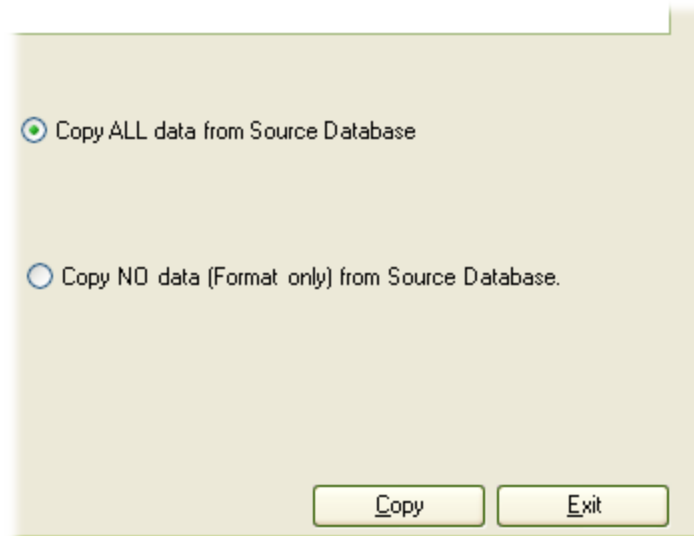
2. SELECT A DESTINATION DATABASE

- **CLICK BROWSE**



Make a Copy of a Database

3. COPY ALL OF THE DATA OR NONE...



A screenshot of a database copy dialog box. The dialog box has a light beige background and a thin green border. It contains two radio button options. The first option, "Copy ALL data from Source Database", is selected with a blue dot. The second option, "Copy NO data (Format only) from Source Database.", is unselected with a white dot. At the bottom right, there are two buttons: "Copy" and "Exit".

☒ Copy ALL data from Source Database

☐ Copy NO data (Format only) from Source Database.

Copy Exit



Make a Copy of a Database

4. COPY ONLY SPECIFIC TABLES...

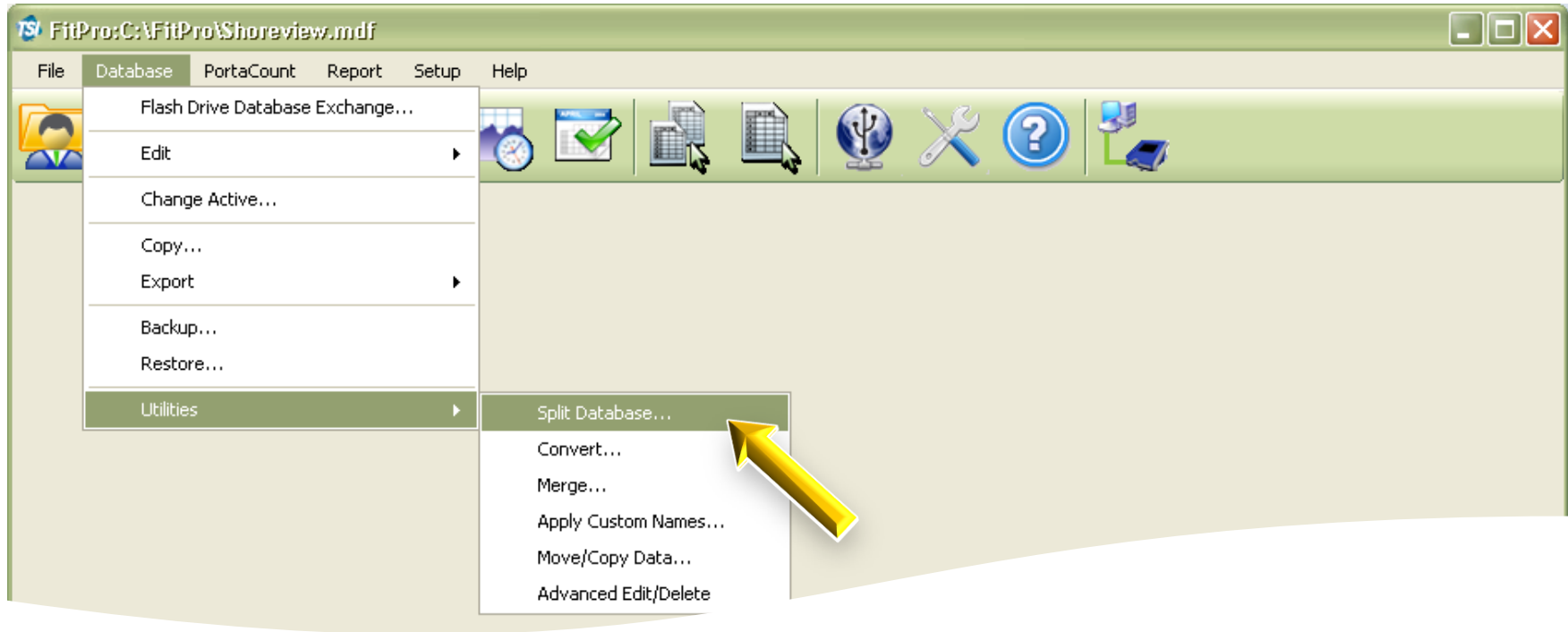
☐ Copy the SELECTED data from Source Database

- ☐ Copy FitTest Table data
- ☐ Copy the People Table data
- ☐ Copy the Respirator Table data
- ☐ Copy the Protocol Table data
- ☐ Copy Daily Check Table



Split a Database

+ Click **Database** ► **Utilities** ► **Split Database...**



Split a Database

Split Database by Date

Records from the Fit Test Table and/or Daily Table in the Source database that were created on or after the selected date will be copied to the Destination Database. If the destination database exists it will be overwritten; otherwise it will be created. Source database will not be altered.

Source Database

C:\FitPro\Shoreview.mdf

Destination Database

C:\FitPro\Shoreview_SPLIT.mdf

☒ Fit Test Table
☐ Daily Table

Select Date

Select from Calendar or select from Database.

☒ Calendar
8/20/2010

☐ Database
8/20/2010

Date Format: M/d/yyyy



Split a Database

Split Database by Date

Records from the Fit Test Table and/or Daily Table in the Source database that were created on or after the selected date will be copied to the Destination Database. If the destination database exists it will be overwritten; otherwise it will be created. Source database will not be altered.

Source Database

C:\FitPro\Shoreview.mdf

Destination Database

C:\FitPro\Shoreview_SPLIT.mdf

☒ Fit Test Table
☐ Daily Table

1. Select a Source Database

- Click Browse

2. Select a Destination Database

- Click Browse

3. Which table?

- Fit Test or Daily



Split a Database

Split Database by Date

Records from the Fit Test Table and/or Daily Table in the Source database that were created on or after the selected date will be copied to the Destination Database. If the destination database exists it will be overwritten; otherwise it will be created. Source database will not be altered.

4. Date used to determine 'where' to split the data

Note:

- **People and Respirator tables will automatically be transferred**

Select Date

Select from Calendar or select from Database.

☒ Calendar

8/20/2010 ▼

☐ Database

8/20/2010 ▼

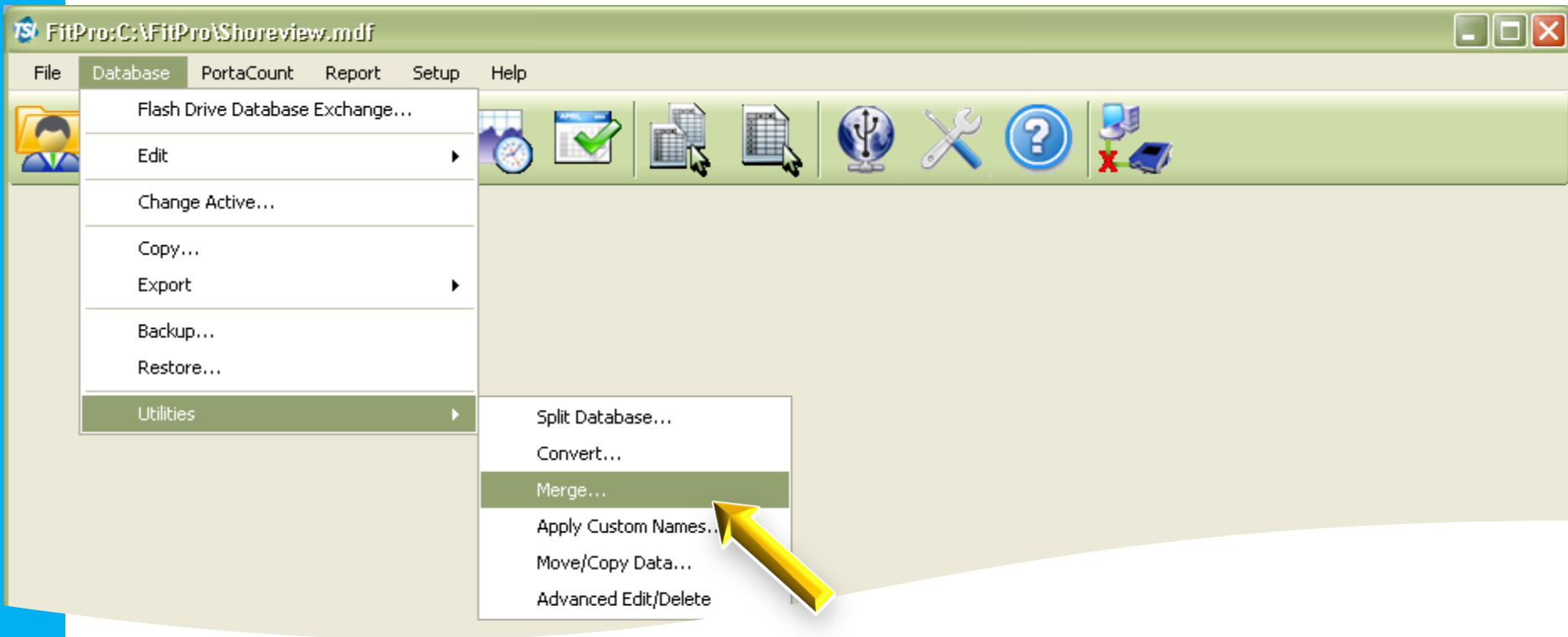
Date Format: M/d/yyyy

Split Exit



Merge a Database

+ Click **Database** ► **Utilities** ► **Merge...**



Merge a Database

Merge Database

Move/Copy records from Source to Destination Database.

Source Database Browse...

C:\FitPro\Shoreview.mdf

Table name: FitTest

Destination Database Browse...

Table name: FitTest

Fit test record filter

☒ All records ☐ Select records

Name1: Comparison1: Value1:

☒ NONE ☐ AND ☐ OR

Name2: Comparison2: Value2:

☐ Delete records in Source Database after copy

Merge Exit



Merge a Database

Merge Database

Move/Copy records from Source to Destination Database.

Source Database

Browse...

C:\FitPro\Shoreview.mdf

Table name FitTest

Destination Database

Browse...

Table name FitTest

Fit test record filter

1. Select a Source Database

- Click Browse

2. Select a Destination Database

- Click Browse



Merge a Database

Select specific Fit Test records from the Fit Test table according to the Test Date

Fit test record filter

☒ All records ☐ Select records

Name1 Comparison1 Value1

☒ NONE ☐ AND ☐ OR

Name2 Comparison2 Value2

☐ Delete records in Source Database after copy



PC-to-PC Database move

FitPro Fit Test Software



Transferring a Fit Pro Database PC to PC

1. COPY a FitPro database to a flash drive



2. MERGE the FitPro database from flash drive into the FitPro database on the new PC



Global FitPro Options

FitPro Fit Test Software



Global FitPro Options

Automatic save <ul style="list-style-type: none"><input type="radio"/> All fit tests<input checked="" type="radio"/> Passed fit tests only<input type="radio"/> Do not save	Automatic termination <ul style="list-style-type: none"><input checked="" type="checkbox"/> Failed overall <p>Terminate fit test when overall fit factor becomes impossible to achieve.</p>	Language English-US
Automatic print Fit Test report <ul style="list-style-type: none"><input checked="" type="radio"/> All fit tests<input type="radio"/> Passed fit tests only<input type="radio"/> Do not print	Format M/d/yyyy h:mm:ss tt : 8/23/2010 2:34:18 PM xxx,xxx,xxx.xxx : 123,456,789.12	

☒ Show signature lines on fit test report
 ☐ Hide ID number during fit test (****)
 ☐ Warn when Fit Factor is above 1000000

Global FitPro Options

+ Click **Setup** ► **Global FitPro Options...**



Global FitPro Options

+ Click **Setup** ► **Global FitPro Options...**



-or-



Global FitPro Options

Global FitPro Options

Automatic save <ul style="list-style-type: none"><input type="radio"/> All fit tests<input checked="" type="radio"/> Passed fit tests only<input type="radio"/> Do not save	Automatic termination <ul style="list-style-type: none"><input checked="" type="checkbox"/> Failed overall <p>Terminate fit test when overall fit factor becomes impossible to achieve.</p>	Language <p>English-US ▼</p>
Automatic print Fit Test report <ul style="list-style-type: none"><input checked="" type="radio"/> All fit tests<input type="radio"/> Passed fit tests only<input type="radio"/> Do not print	Format <p>M/d/yyyy h:mm:ss tt : 8/23/2010 3:16:16 PM</p> <p>xxx,xxx,xxx.xxx : 123,456,789.12</p>	

☒ Show signature lines on fit test report

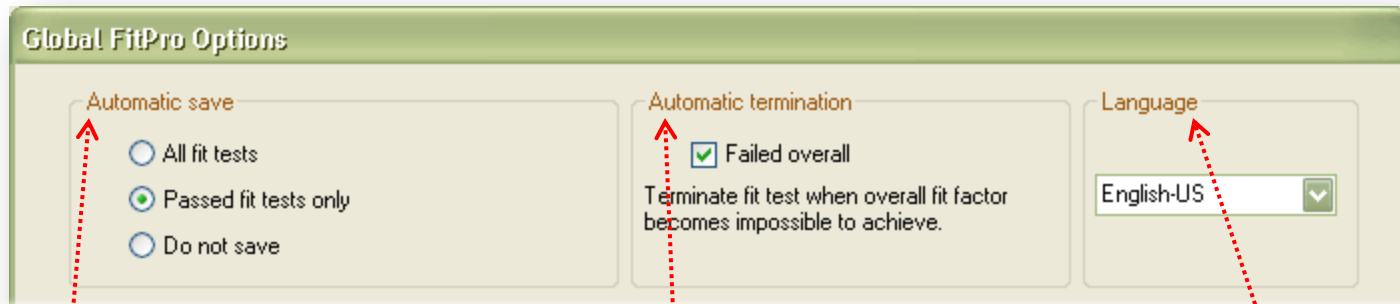
☐ Hide ID number during fit test ("xxx")

☐ Warn when Fit Factor is above

1000000



Global FitPro Options



Global FitPro Options

Automatic save

- ☐ All fit tests
- ☒ Passed fit tests only
- ☐ Do not save

Automatic termination

☒ Failed overall

Terminate fit test when overall fit factor becomes impossible to achieve.

Language

English-US

Automatic
Save

Automatic
Termination

Language

Global FitPro Options

Automatic
Print

The screenshot shows a software interface with two main sections. The left section, titled 'Automatic print Fit Test report', contains three radio button options: 'All fit tests' (selected), 'Passed fit tests only', and 'Do not print'. The right section, titled 'Format', displays two lines of formatted data: a date and time '8/23/2010 3:16:16 PM' and a numerical value '123,456,789.12'. Red dotted arrows originate from the 'Automatic Print' and 'Format' buttons and point to these sections.

Automatic print Fit Test report

- ☒ All fit tests
- ☐ Passed fit tests only
- ☐ Do not print

Format

M/d/yyyy h:mm:ss tt : 8/23/2010 3:16:16 PM

xxx,xxx,xxx.xxx : 123,456,789.12

Format

Global FitPro Options

Change Active Database

Active Database

Select Active Database for saving new fit tests.

Database name and location Browse...

C:\FitPro\Shoreview.mdf

☒ The same Active Database is always used.
Do not show this dialog on startup.

Advanced >> Create New OK Exit

Change Database ☒ Show signature lines on fit test report

Fit Test Card Options ☐ Hide ID number during fit test ("xxx")

Configuration ☐ Warn when Fit Factor is above 1000000

Save Exit



Global FitPro Options

Fit test card options

Change card margins and printer settings.

Change Settings

Enter your company name for the last line on Fit Test card. (limit 60 characters)

*** Your company contact information here ***

☐ Automatically print 1 card at the completion of each passed fit test.

Exit

Change Database

Fit Test Card Options

Configuration

☒ Show signature lines on fit test report

☐ Hide ID number during fit test (****)

☐ Warn when Fit Factor is above

1000000

Save

Exit



Global FitPro Options

User Configuration

Custom field names (10 character limit)

Custom1	CUSTOM1
Custom2	CUSTOM2
Custom3	CUSTOM3
Custom4	CUSTOM4

Define up to 10 custom data choices (25 character limit) for People data

Label	Data	
CUSTOM1		Edit...
CUSTOM2		Edit...
CUSTOM3		Edit...
CUSTOM4		Edit...
Company		Edit...
Location		Edit...

Save Exit

Change Database

Fit Test Card Options

Configuration

☒ Show signature lines on fit test report

☐ Hide ID number during fit test (****)

☐ Warn when Fit Factor is above 1000000

Save Exit



Global FitPro Options

Signature

Hidden ID
#

Suspicious
Fit Factors

The screenshot shows a software configuration window titled "Global FitPro Options". On the left, there are three buttons: "Change Database", "Fit Test Card Options", and "Configuration". The "Configuration" button is selected. On the right, there are three checkboxes with corresponding labels: "Show signature lines on fit test report" (checked), "Hide ID number during fit test (xxx)" (unchecked), and "Warn when Fit Factor is above" (unchecked). Below the third checkbox is a text input field containing the value "1000000". At the bottom right, there are two buttons: "Save" and "Exit". Three red dotted arrows originate from the labels "Signature", "Hidden ID #", and "Suspicious Fit Factors" above the dialog box. The first arrow points to the "Show signature lines on fit test report" checkbox. The second arrow points to the "Hide ID number during fit test (xxx)" checkbox. The third arrow points to the "Warn when Fit Factor is above" checkbox.

Change Database

Fit Test Card Options

Configuration

☒ Show signature lines on fit test report

☐ Hide ID number during fit test (xxx)

☐ Warn when Fit Factor is above

1000000

Save

Exit



Did you know?



**Fit factors greater than 100,000
are considered “suspicious”**

**Troubleshoot with the
Realtime Fit Factor Display**

- ✓ Run the Realtime Fit Factor as described previously
- ✓ Purposely break the seal around their face, slightly
- ✓ If the fit factor does not decrease dramatically then there is likely a block or kink in the clear (mask) tube



Summary

- + Creating and Changing the FitPro Active Database
- + Discussion of the Copy, Split, and Merge functions
- + Description of the Global FitPro Options screen



PortaCount Academy

Online Training Center

- Available at the PortaCount Academy website;
www.tsi.com/PCacademy

Answers

- Available at www.tsi.com/PCacademy and
www.tsi.com/portacount

