

FLASH DRIVE DATABASE EXCHANGE FUNCTION

RESFT 203

Created by: John Morton



Course Description

- + Develop an understanding of database management during Stand-Alone operations
- + Creating and verifying a flash drive (XML) database via the FitPro software
- + Importing and Exporting data between the flash drive and the FitPro software
- + Limitations of the flash drive 'xml' database
- + Followed by a Q & A session

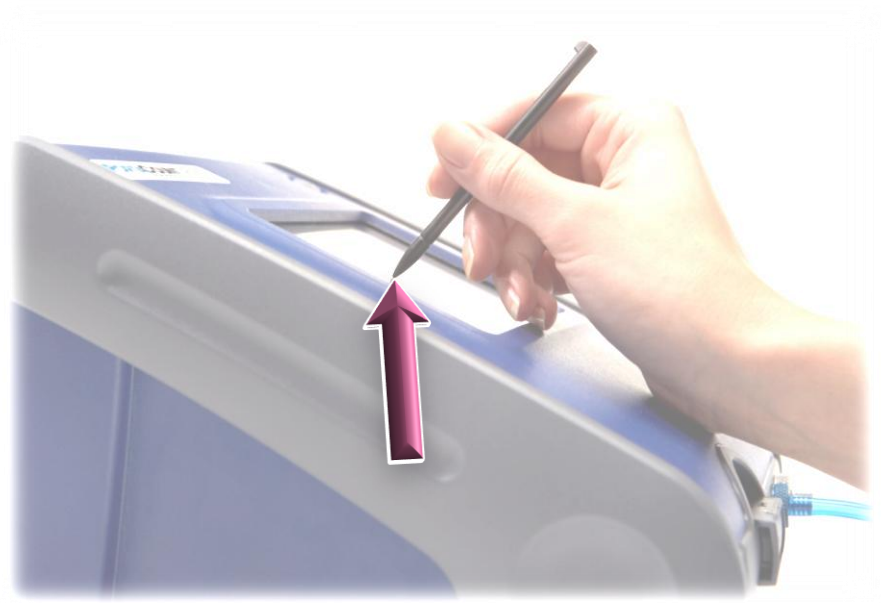


Course Key

Left Click



Right Click



Required Material

1. PortaCount Pro/Pro+
2. USB Flash Drive*
3. Personal Computer (PC) with FitPro Fit Test software v2.0 (or greater) installed



** provided with PortaCount Pro/Pro+*



Let's begin...

1. Power on your PC
2. Power on the PortaCount Pro/Pro+
3. Connect the Flash Drive to an available USB port on the PC



Helpful Definitions

Exporting



- *Creating a new XML database or overwriting an existing XML database*

Importing



- *Copying data from the XML database so as to save the data in a FitPro software database*



Open Windows Explorer

2 ways to accomplish this:

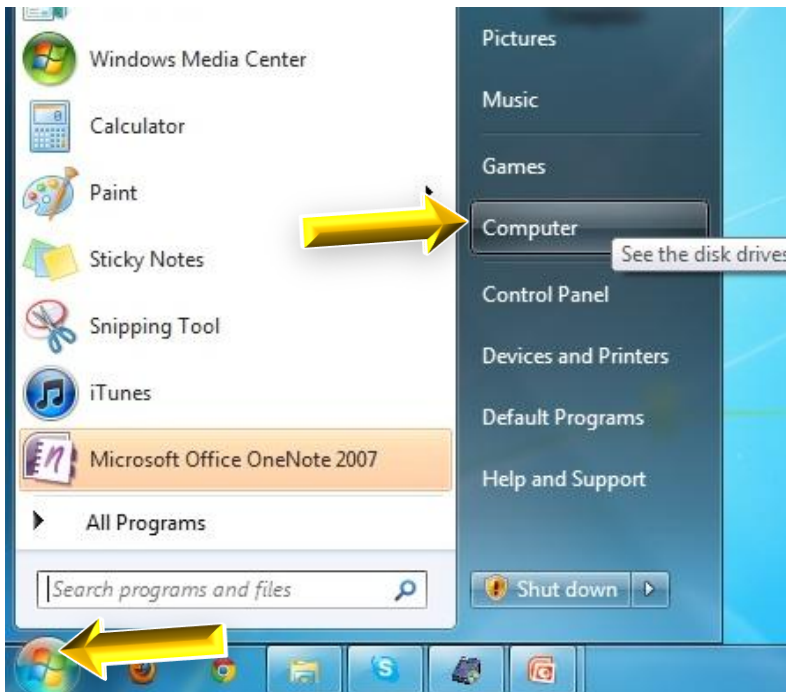
1. Double-Click on the **My Computer** icon, located on desktop



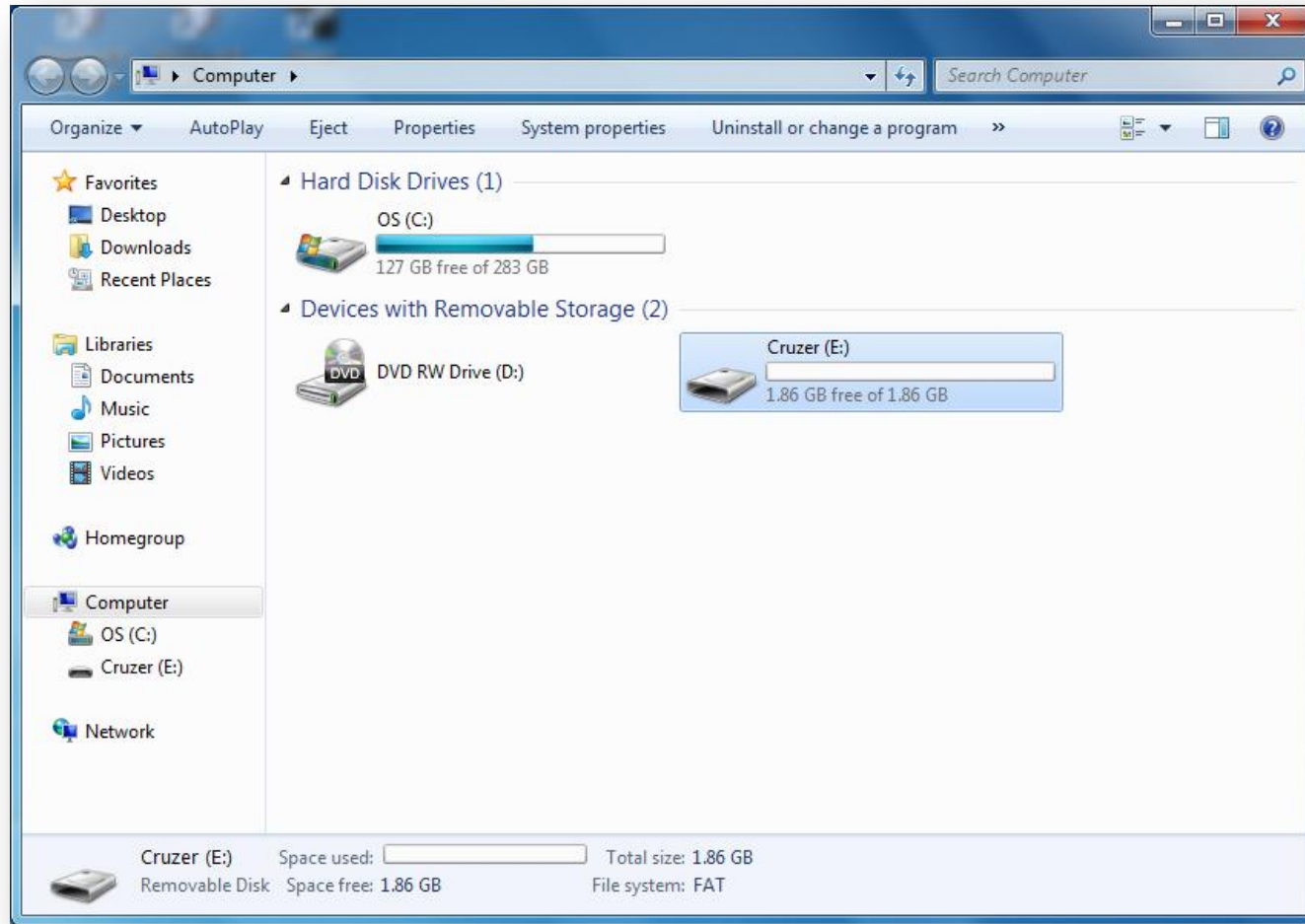
-or-

2. Open your **Start** menu, click on **My Computer**

➤ Windows XP users will see “My Computer”



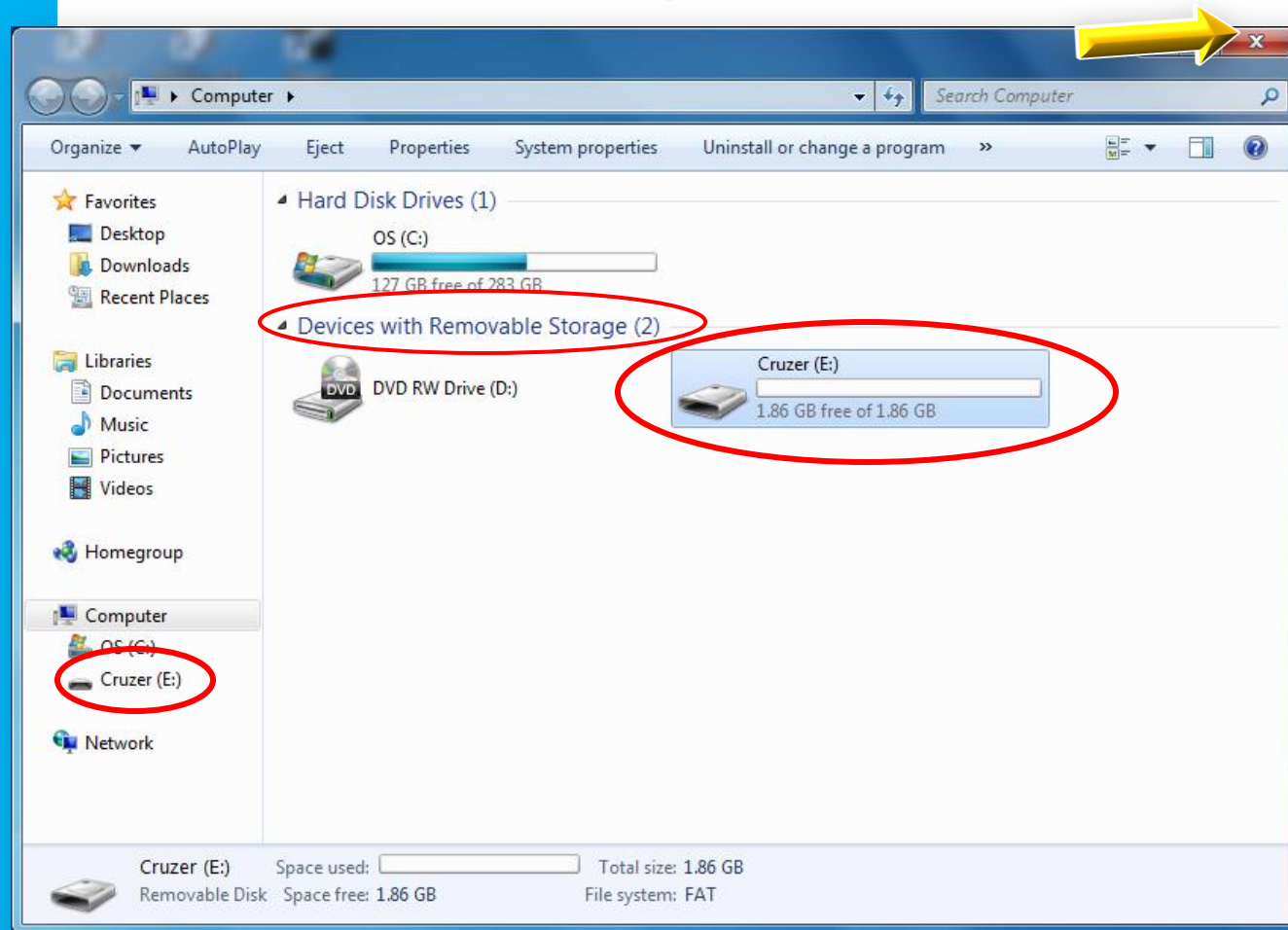
Windows Explorer



This window may look slightly different depending on the View settings



Windows Explorer



- + Listed under **Devices with Removable Storage** or as **Removable Disk**
- + Note drive letter assigned, example “E”
- + Close **Windows Explorer**



Open the FitPro Software

2 ways to accomplish this:

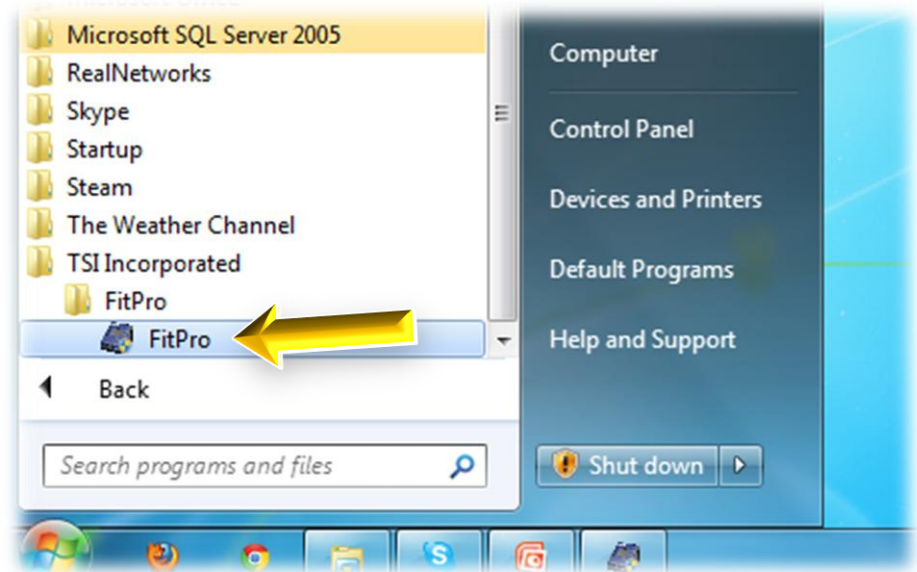
1. Double-Click the **FitPro** icon

- Located on desktop

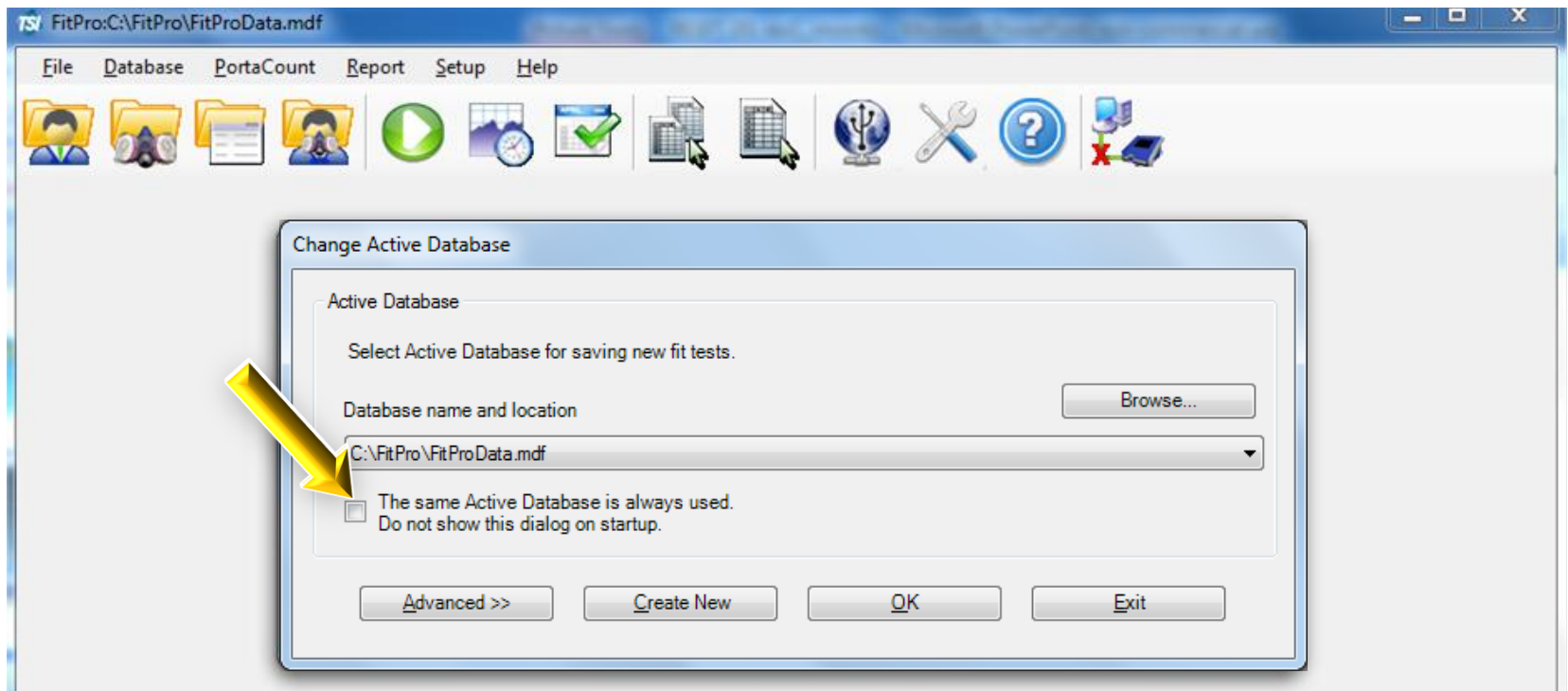
-or-

2. Open your **Start** menu, go to:

All Programs ► TSI Incorporated ► FitPro ► FitPro_V2.0.x



Opening FitPro

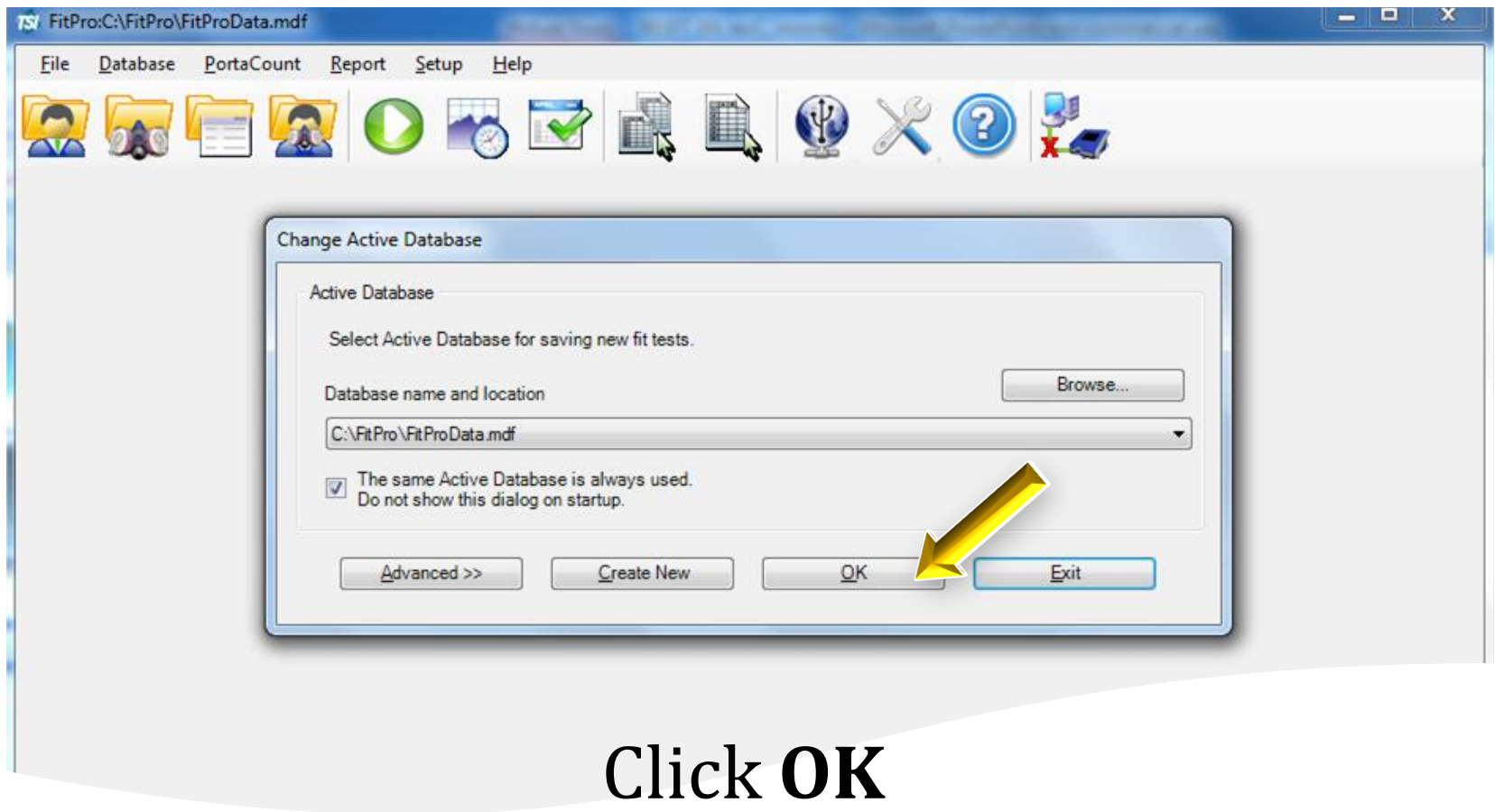


This window appears when the “Same Active Database is always used” function has not been checked.

If you always use the same FitPro database you may want to check this box as a convenience



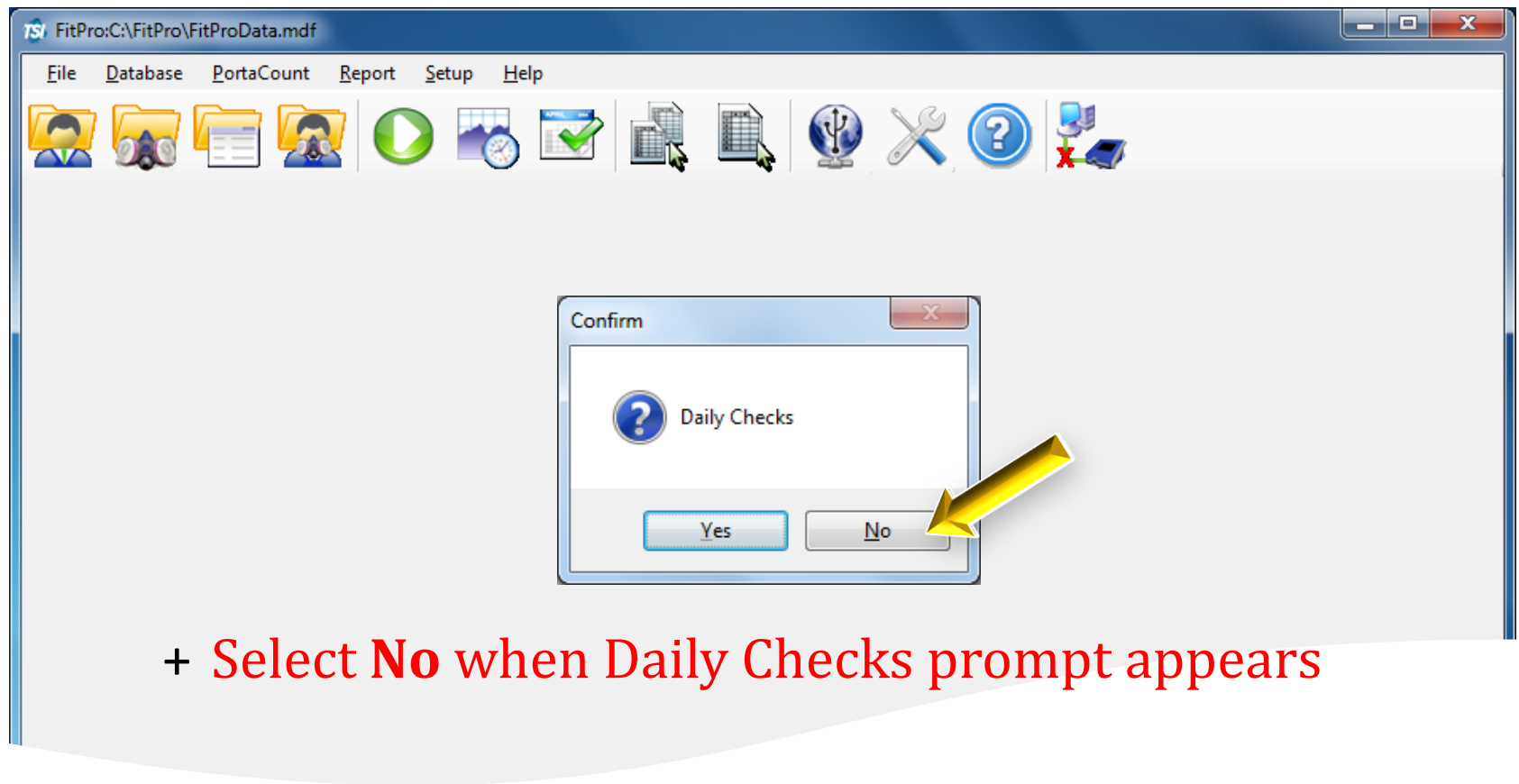
Opening FitPro



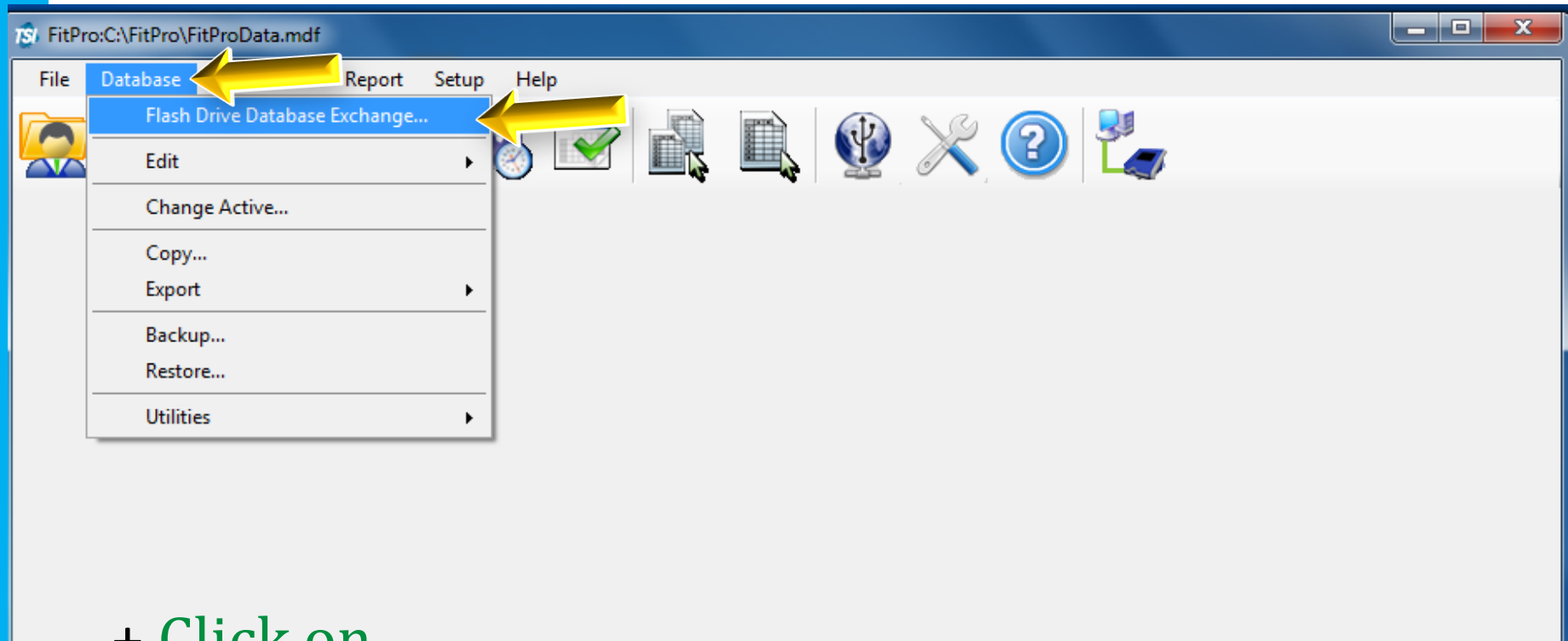
If you always use the same FitPro database you may want to check this box as a convenience



Opening FitPro



Flash Drive Database Exchange

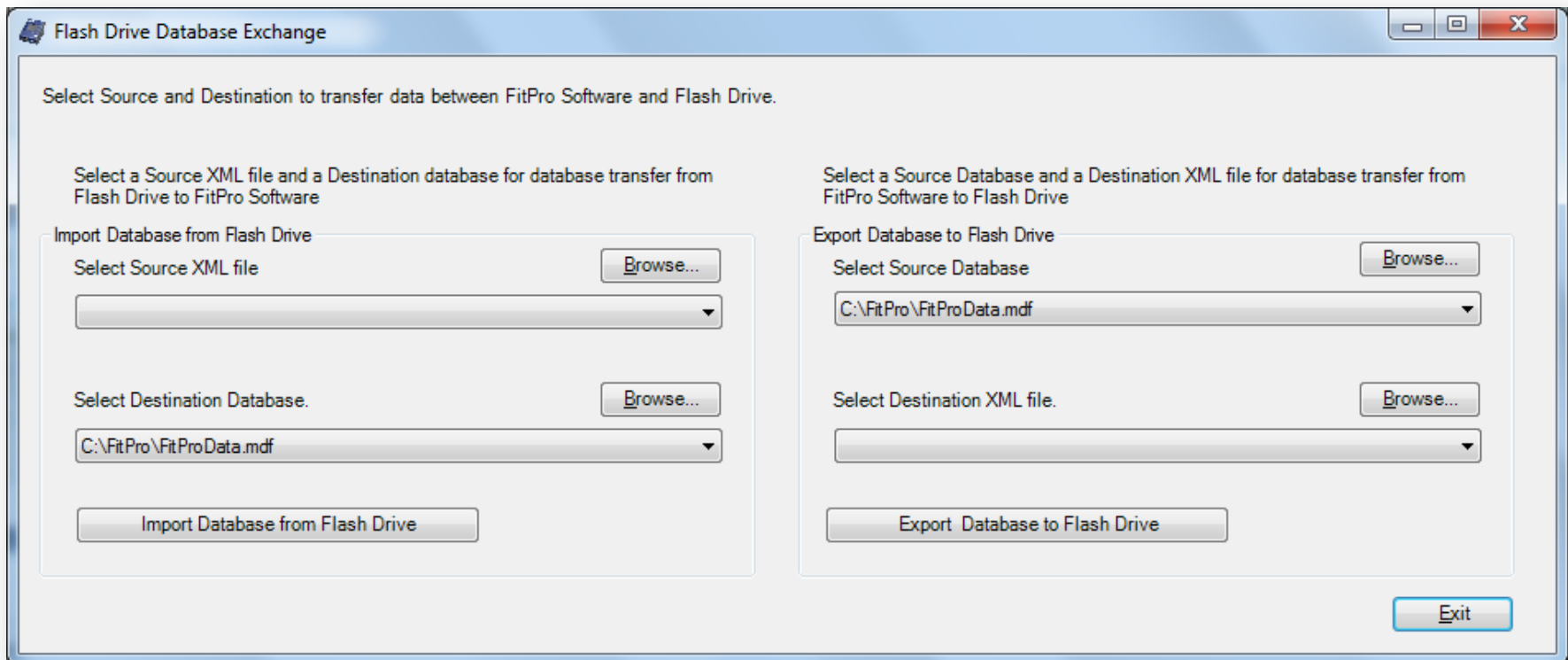


+ Click on
Database ► Flash Drive Database Exchange



Flash Drive Database Exchange

Both **Export** and **Import** functions are used to transfer data between a database on the flash drive and a database used by the FitPro software



The dialog box is titled "Flash Drive Database Exchange" and contains two main sections for data transfer. The left section, "Import Database from Flash Drive", allows selecting a source XML file and a destination database. The right section, "Export Database to Flash Drive", allows selecting a source database and a destination XML file. Both sections include "Browse..." buttons for file selection and a final action button at the bottom right.

Flash Drive Database Exchange

Select Source and Destination to transfer data between FitPro Software and Flash Drive.

Select a Source XML file and a Destination database for database transfer from Flash Drive to FitPro Software

Import Database from Flash Drive

Select Source XML file

Select Destination Database.

Select a Source Database and a Destination XML file for database transfer from FitPro Software to Flash Drive

Export Database to Flash Drive

Select Source Database

Select Destination XML file.



Helpful Definitions

XML

- file extension for databases located on the flash drive & accessible by the PortaCount Pro/Pro+ during Stand-Alone operation
 - *Example* “FitTestData.xml”



MDF

- SQL Server Database; file extension for databases located on the PC's hard drive and used by the FitPro software
 - *Example* “FitTestData.mdf”

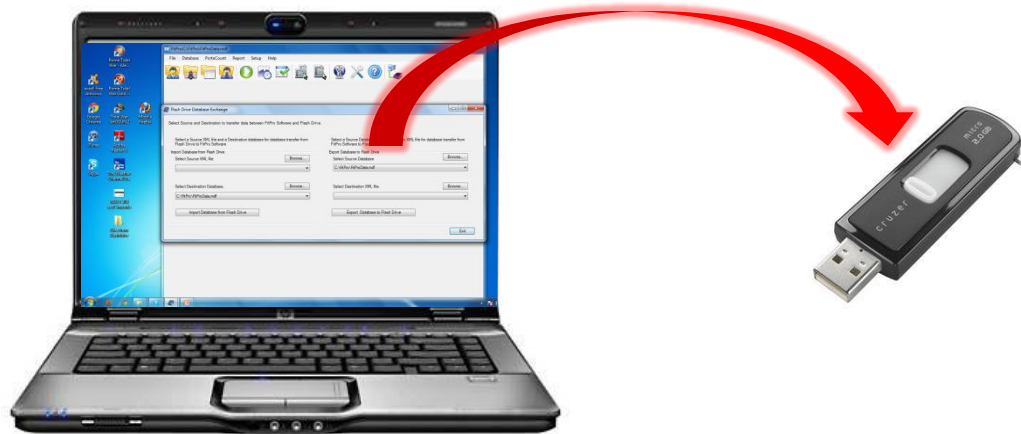


Did you know?



The flash drives will initially be empty...

no XML database



Before you save your fit test data to the flash drive, you **must** EXPORT a database to the flash drive...

This is where the data will be saved to on the flash drive.



Exporting a database

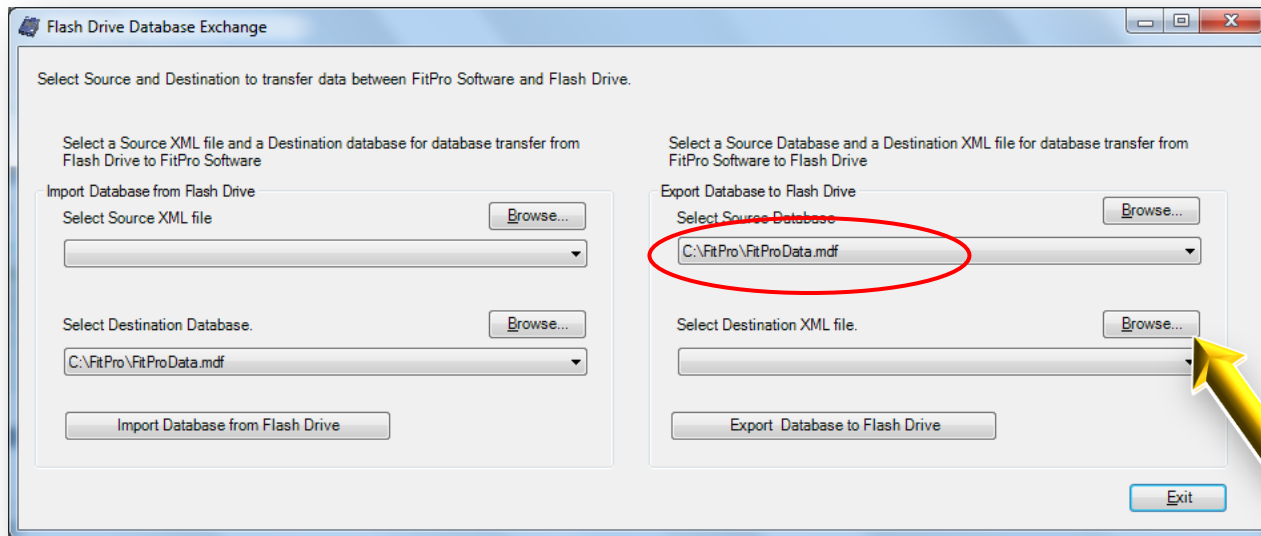


Make sure flash drive is attached to Computer

Flash Drive Database Exchange

1st - **Export** an (XML) database

- ✓ Verify which FitPro database is used to create the new flash drive (XML) database
- ✓ Click **Browse** from the “Select Destination XML file” menu

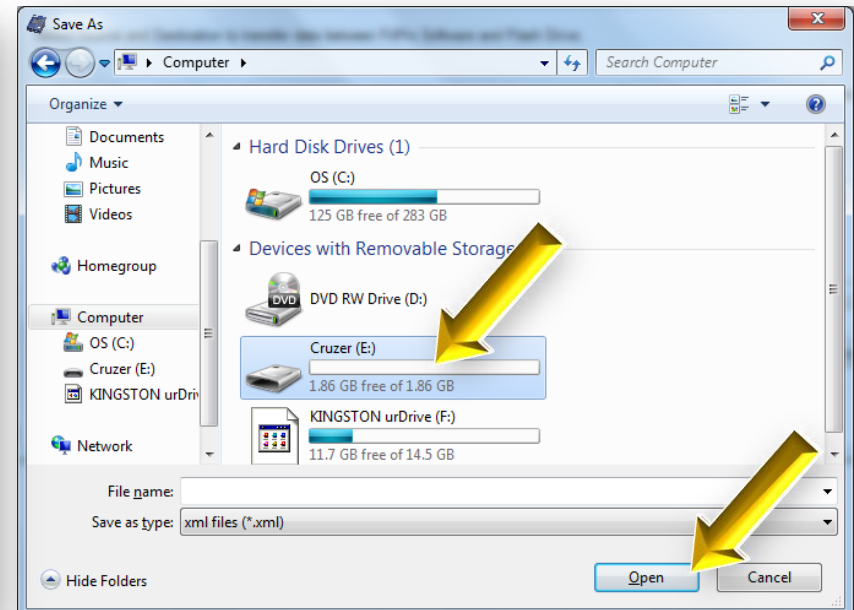
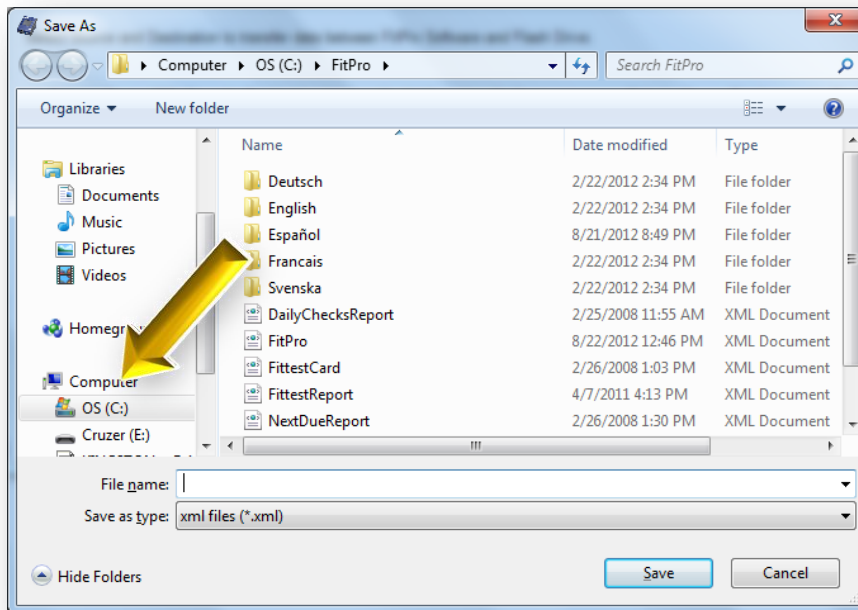


Flash Drive Database Exchange

1. Click **Computer**

- usually located along the left hand side

2. Select the Flash Drive Click **Open**



Flash Drive Database Exchange

+ Type in your preferred database name

For example...

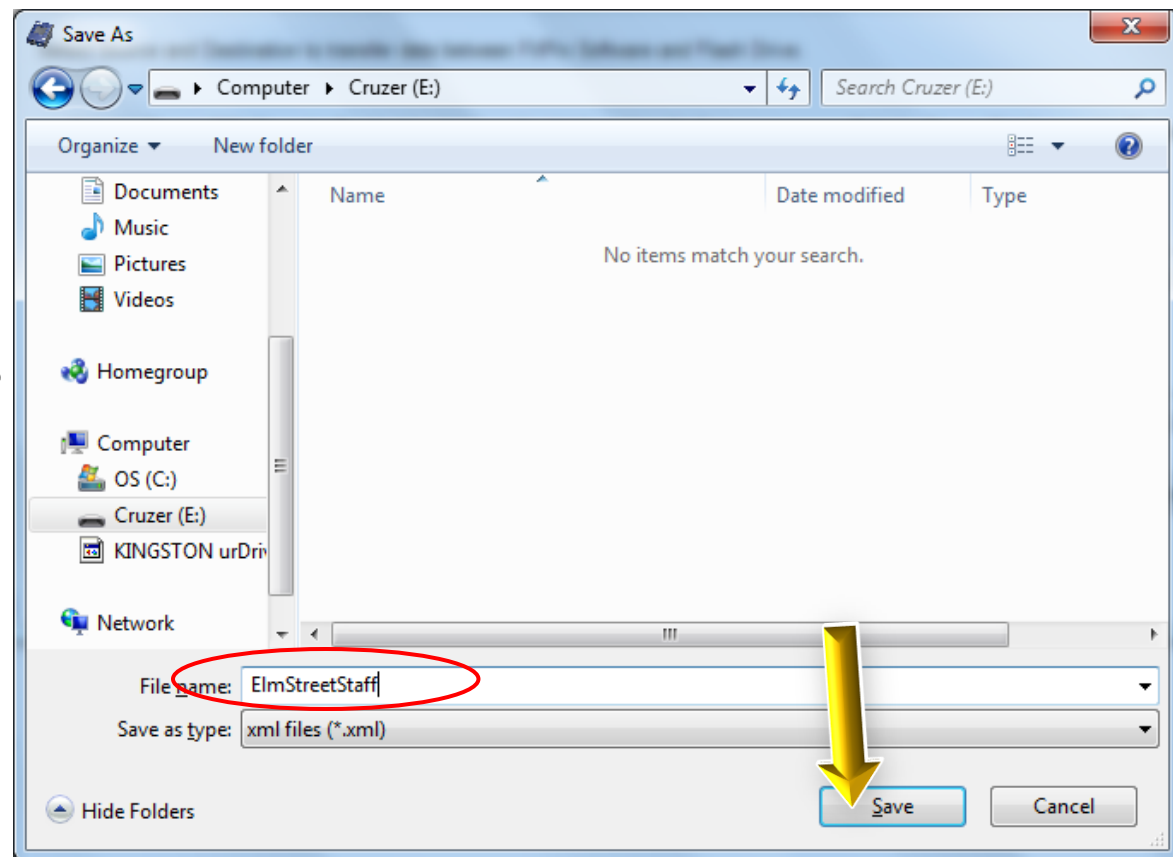
by location:

“ElmStreetStaff”

by year:

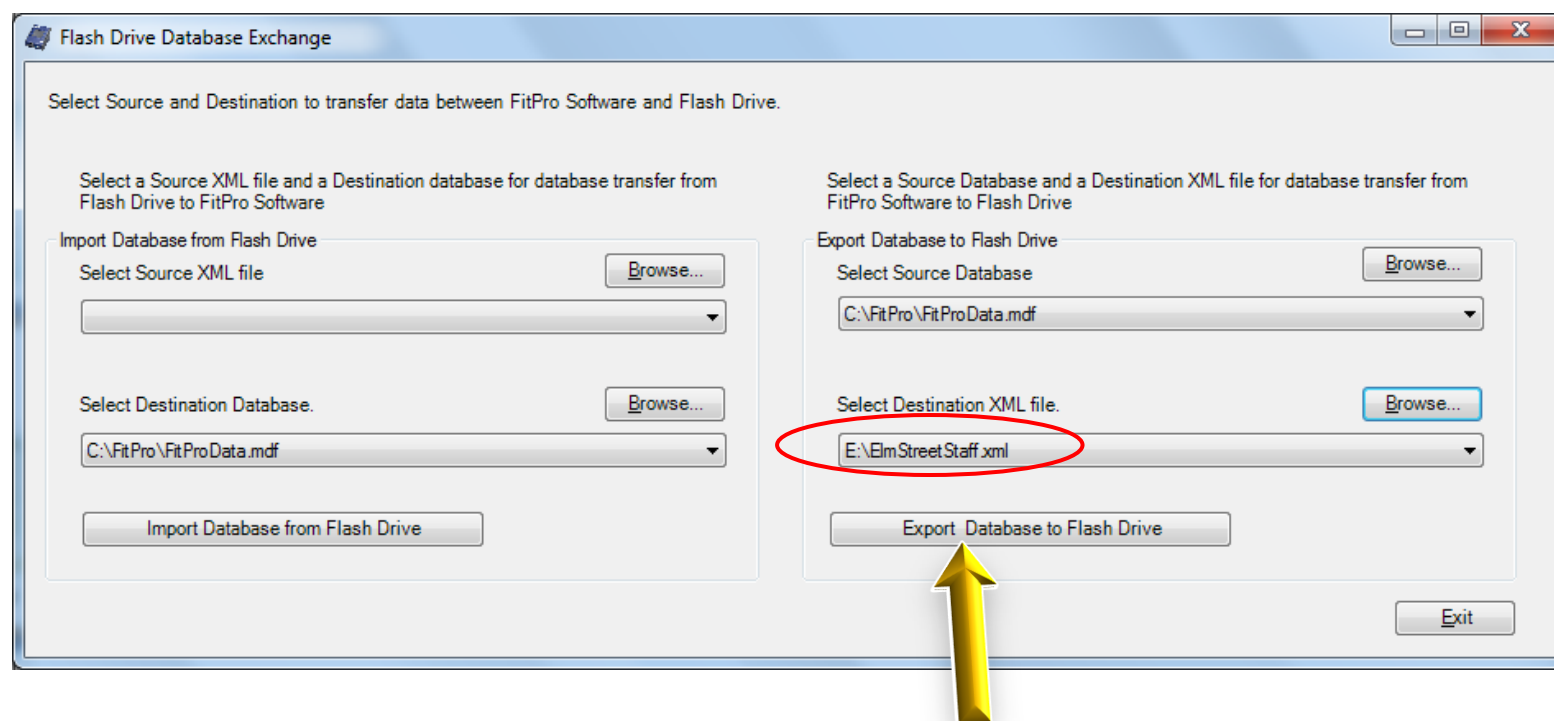
“FitTestData2011”

+ Click Save



Flash Drive Database Exchange

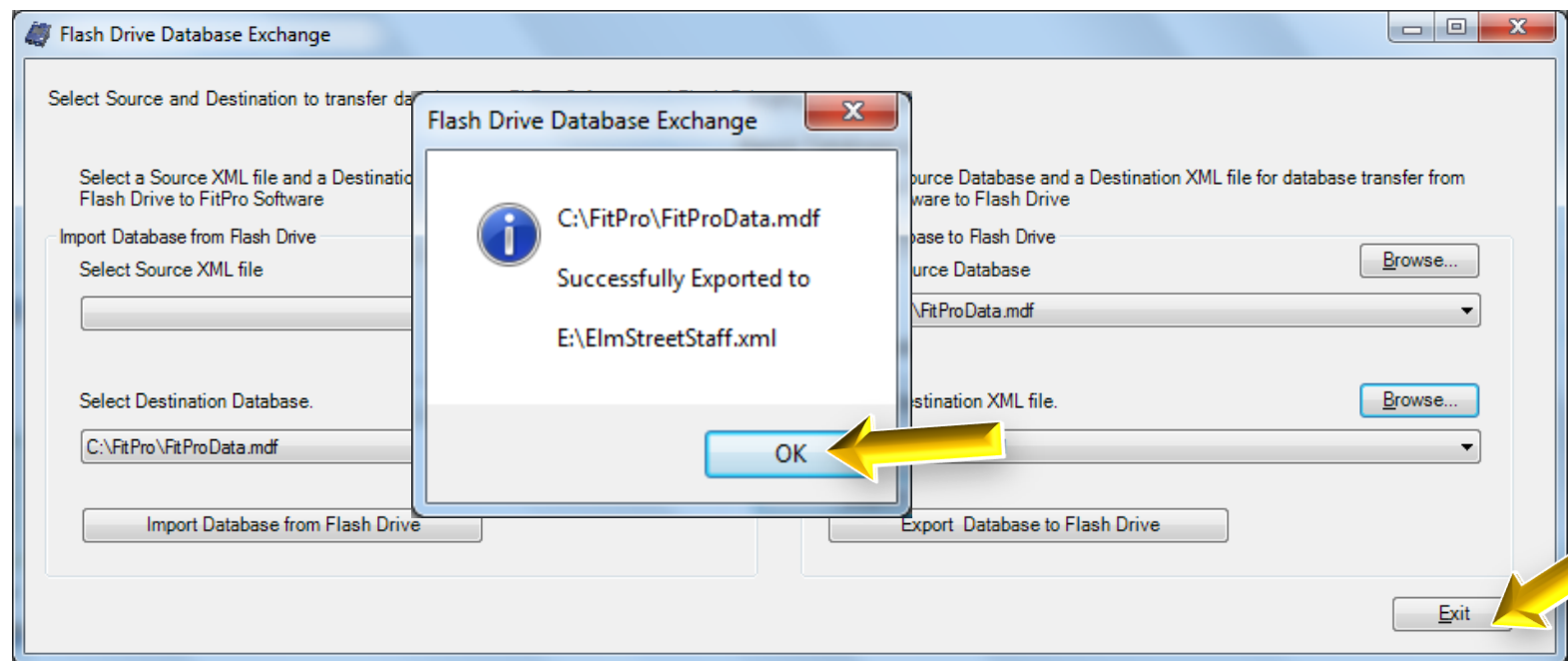
+ Click **Export Database to Flash Drive**



Flash Drive Database Exchange

+ Click **OK**

+ Click **Exit**



You're Done!

Stand-Alone Database Check

**Remove flash drive from PC
and
Attach to PortaCount Pro**



Select Database



- + Touch on **Database**
- + Touch on **Select Database**



Select Database

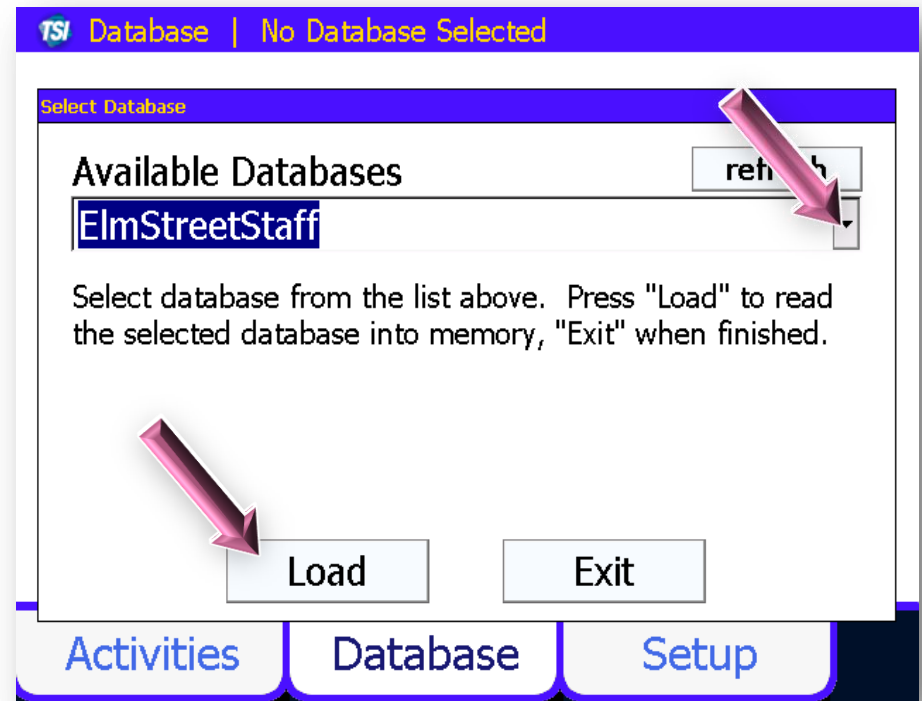
+ Select Database via
drop down window

for example...



“ElmStreetStaff”

+ Touch Load



Select Database

+ Touch **Exit**

You're Done!

The screenshot shows a software interface with a blue header bar containing the TSI logo and the text 'Database | No Database Selected'. Below the header is a white box titled 'Select Database'. Inside this box, there is a section 'Available Databases' with a 'refresh' button to its right. A dropdown menu is open, showing 'ElmStreetStaff' as the selected option. Below the dropdown, a message 'Successfully loaded database ElmStreetStaff.' is displayed and circled in red. At the bottom of the white box are two buttons: 'Load' and 'Exit'. A red arrow points to the 'Exit' button. Below the white box is a blue navigation bar with three tabs: 'Activities', 'Database', and 'Setup'.



Importing a database



Attach flash drive to PC

Importing Data

After performing fit tests with the PortaCount Pro/Pro+ in Stand Alone mode...

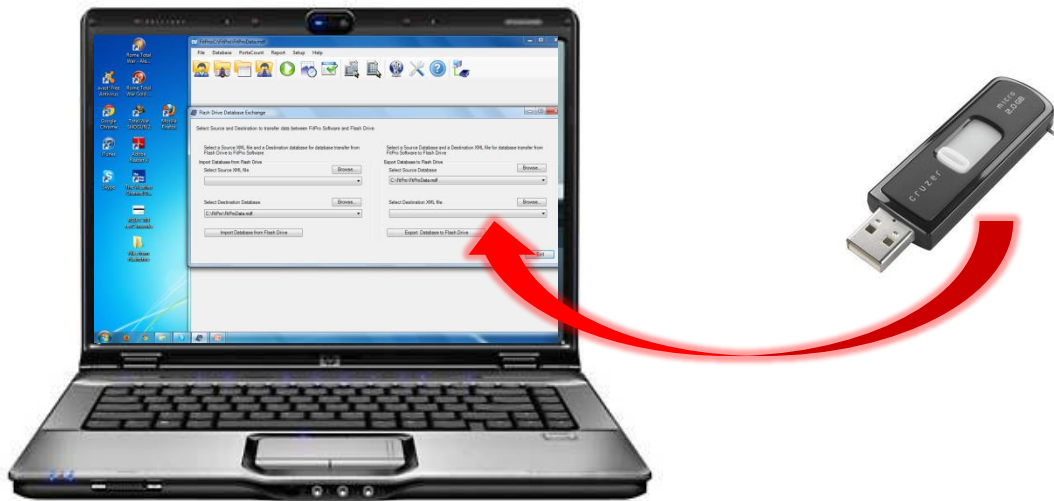


we need to retrieve the data from the
flash drive database

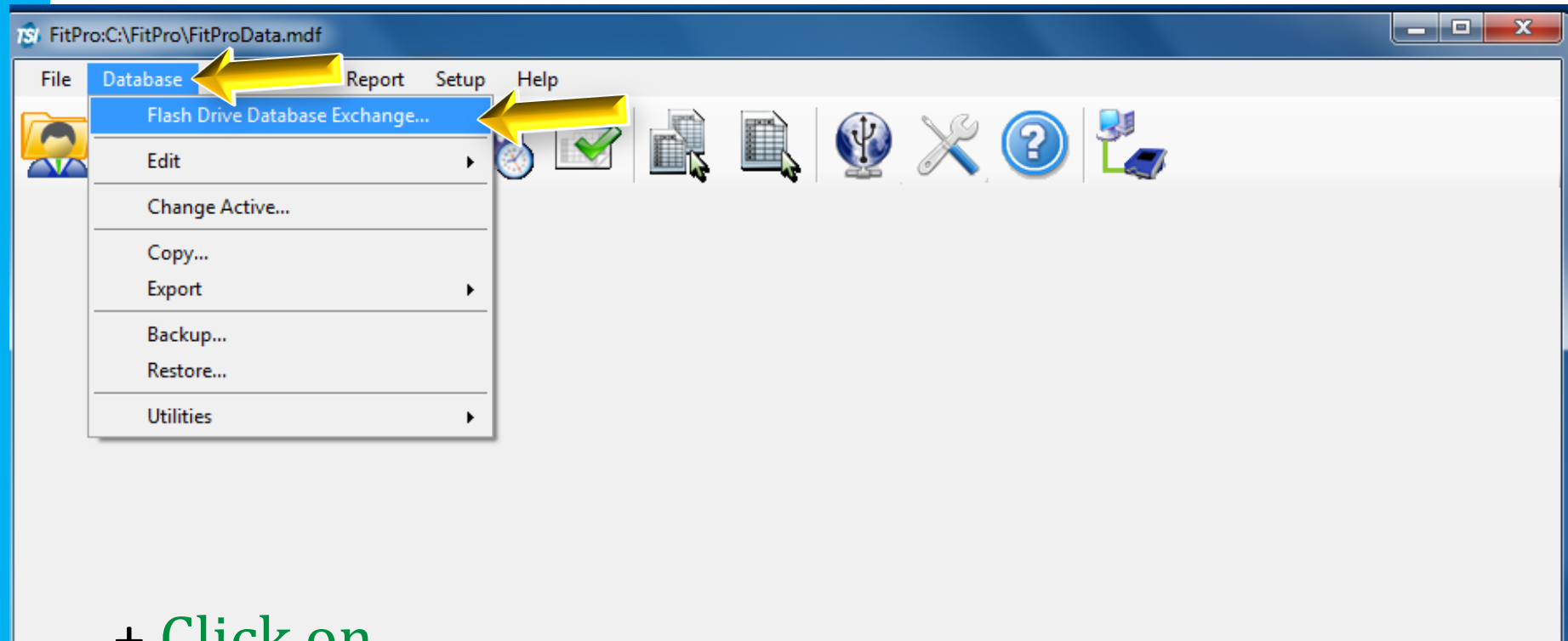


Importing Data

Use the IMPORT function to copy the data from the flash drive into the FitPro software



Flash Drive Database Exchange



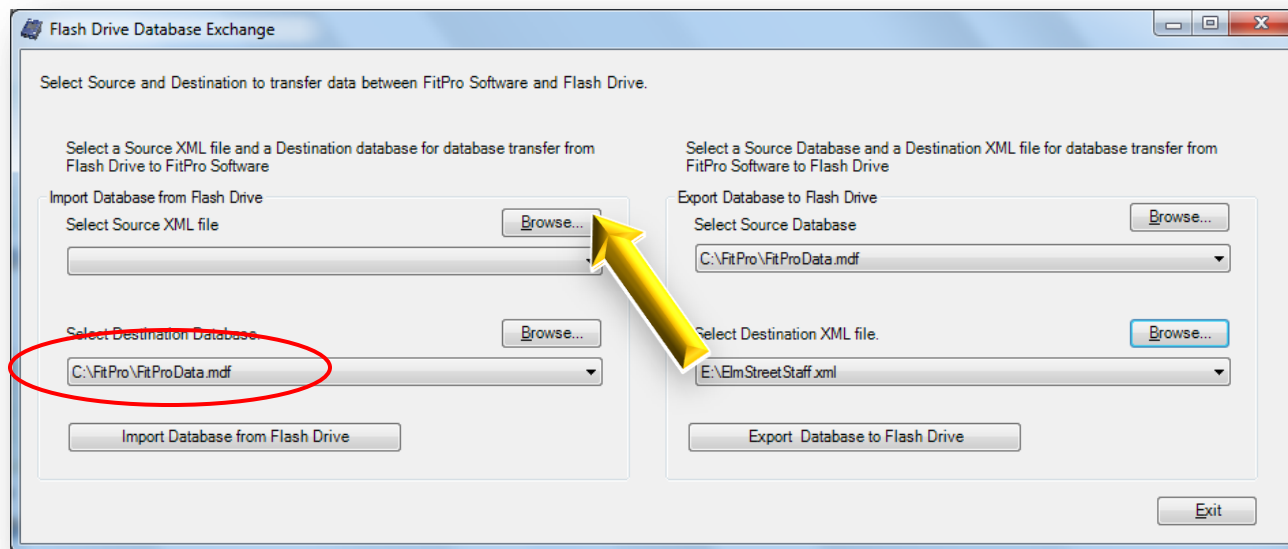
+ Click on
Database ► Flash Drive Database Exchange



Flash Drive Database Exchange

1st - **Import** an (XML) database

- ✓ Verify which FitPro database (MDF) is selected to receive the flash drive (XML) data
- ✓ Click **Browse** from the “Select Source XML file” menu

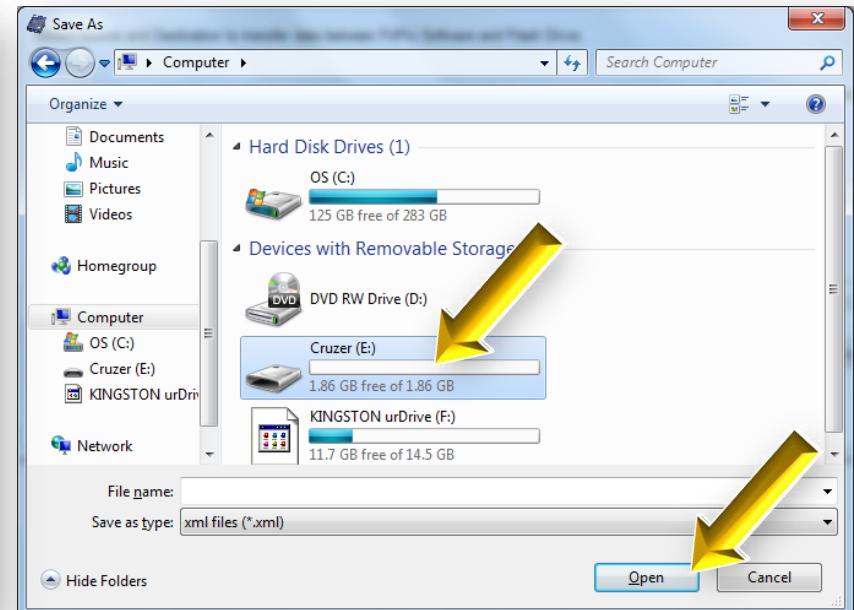
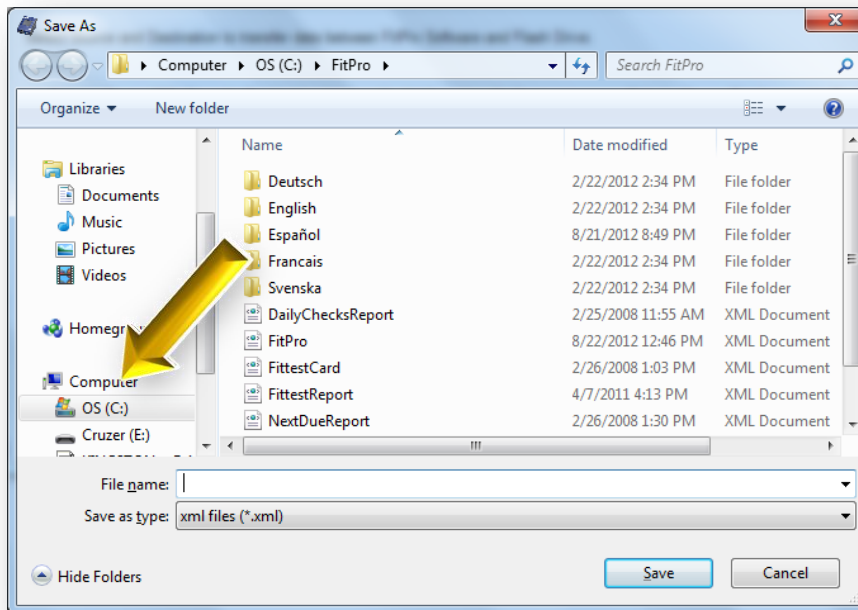


Flash Drive Database Exchange

1. Click **Computer**

- usually located along the left hand side

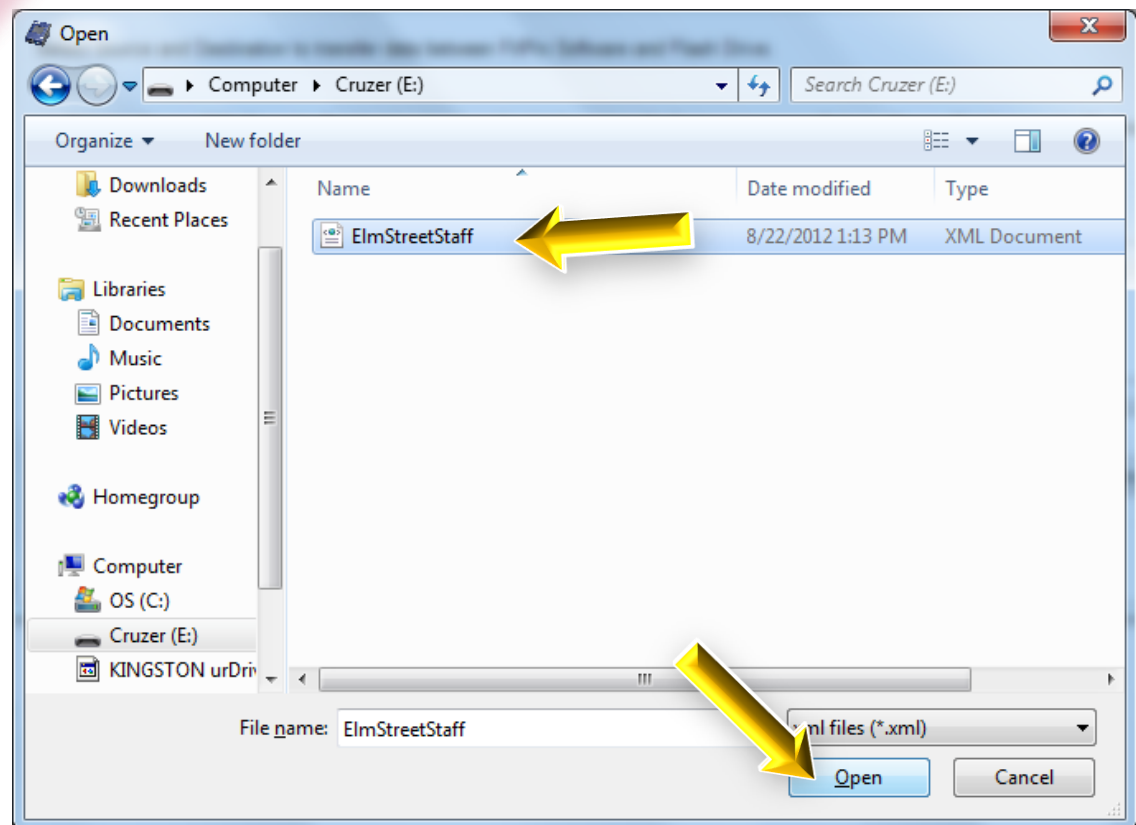
2. Select the Flash Drive Click **Open**



Flash Drive Database Exchange

+ Select the appropriate XML database
for example **“ElmStreetStaff.xml”**

+ Click **Open**



Flash Drive Database Exchange

+ Click **Import Database to Flash Drive**

Flash Drive Database Exchange

Select Source and Destination to transfer data between FitPro Software and Flash Drive.

Select a Source XML file and a Destination database for database transfer from Flash Drive to FitPro Software

Import Database from Flash Drive

Select Source XML file

E:\ElmStreetStaff.xml

Select Destination Database.

C:\FitPro\FitProData.mdf

Select a Source Database and a Destination XML file for database transfer from FitPro Software to Flash Drive

Export Database to Flash Drive

Select Source Database

C:\FitPro\FitProData.mdf

Select Destination XML file.

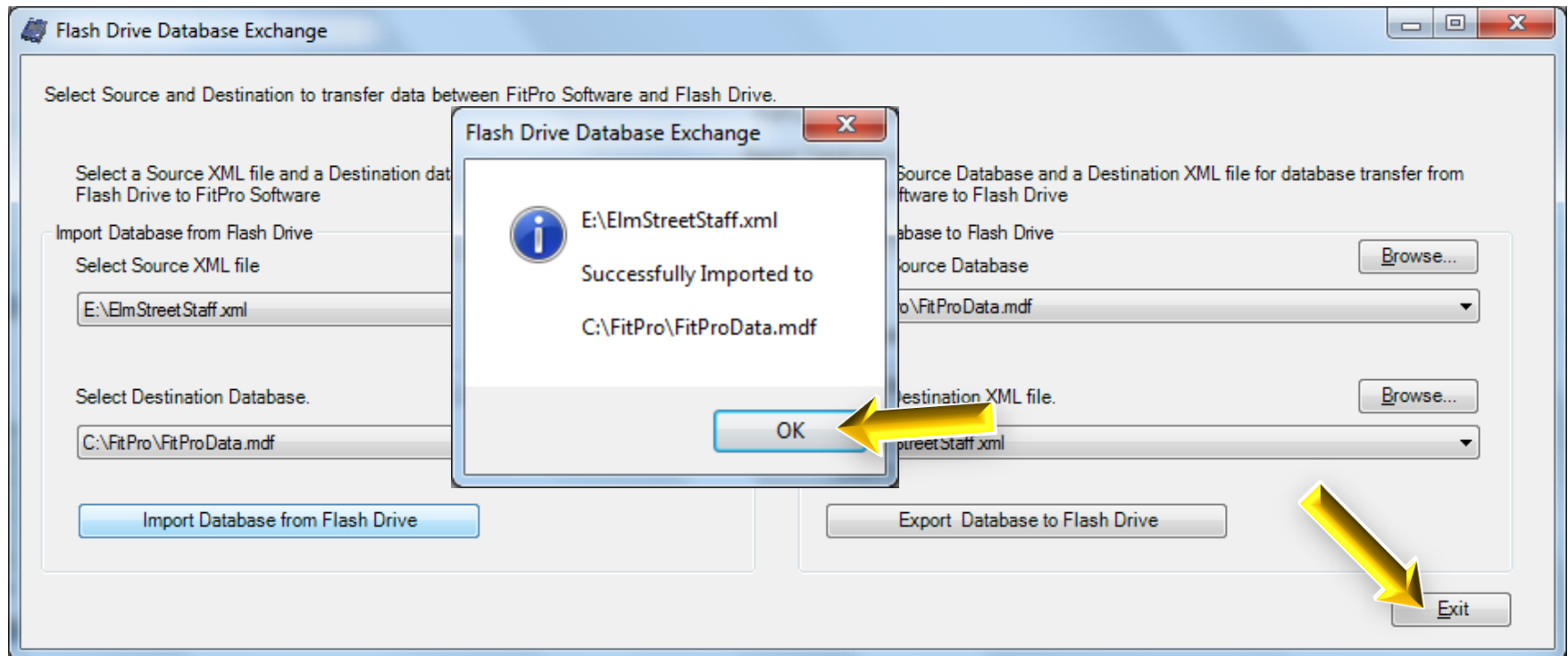
E:\ElmStreetStaff.xml



Flash Drive Database Exchange

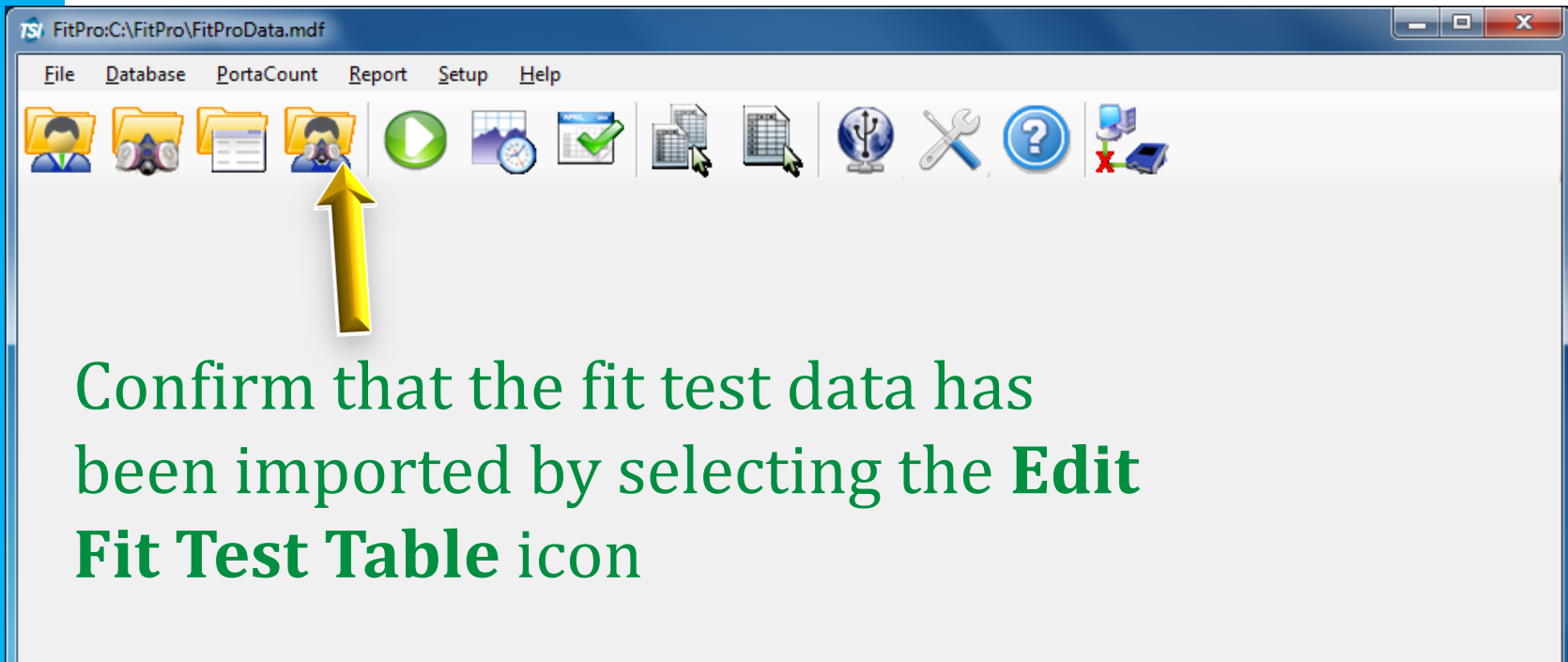
+ Click **OK**

+ Click **Exit**



You're Done!

Import complete!



Import complete!

TSI FitPro: C:\FitPro\FitProData.mdf

File Database PortaCount Report Setup Help

Edit Fit Test Table

Sorted Records: MORTON, JOHN, 12345, 8/22/2012 2:04:01 PM, 3M 9210 N95 [100]

ID Number: 12345

Last Name: MORTON

First Name: JOHN

Company: TSI

Location: SHOREVIEW

Test Date M/d/yyyy: 8/22/2012 2:04:01 PM

Due Date M/d/yyyy: 8/22/2013

Mask Size: M/L

Operator: JDM

Note (Limit 128 Characters): WEARS GLASSES

PortaCount S/N: 8038093401

PortaCount M/N: 8038_N95

Pass Level: 100

Overall Fit Factor: 200+

Overall Pass: YES

Protocol: OSHA 29CFR1910.134

Respirator: 3M 9210 N95 [100]

View Results

Search

Delete

Print Card

Print Report

Save

Exit



XML Limitations

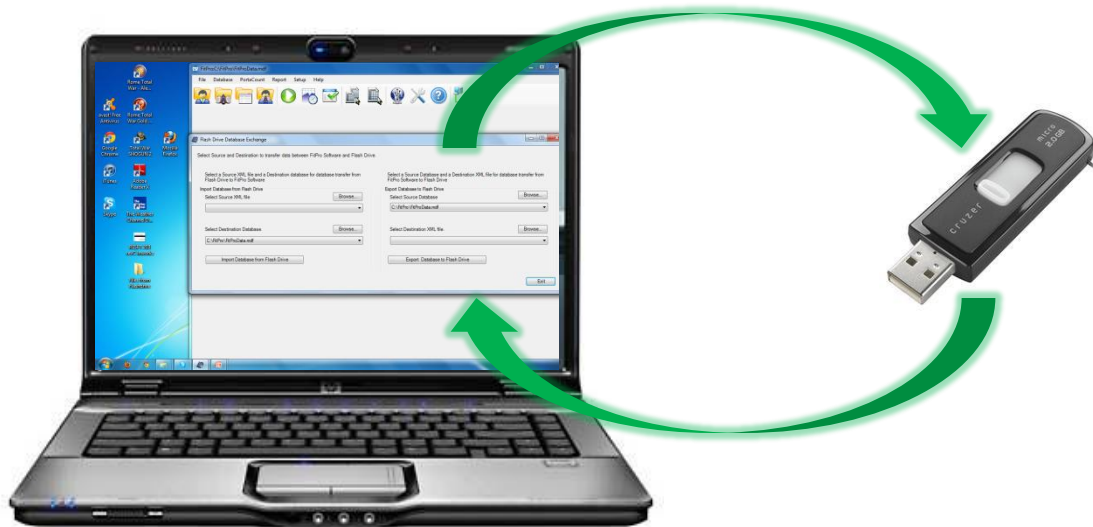
+ The XML Database can be no larger than 1MB

1MB = ~420 People records + 420 Fit Test records



XML Limitations

Refresh your Flash Drive Database...



overwrite it using the **Export** function



Summary

+ Flash Drive Database Exchange Screen

- Exporting Data to the flash drive
- Importing Data from the flash drive

+ Flash Drive Database

- Database management
- Creation of the database
- Limitations



PortaCount Academy

Online Training Center

- Available at the PortaCount Academy website;
www.tsi.com/PCacademy

Answers

- Available at www.tsi.com/PCacademy and
www.tsi.com/portacount

