

Fit Test Operator Training



TSI Portacount Training



Official TSI
Instruments
Distributor

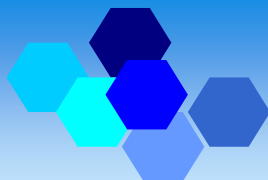
HSE282/28 requires that fit testing should only be conducted by a trained competent fit test operator.

Qualitative Fit Test Training

“Face Fit Testing is a vital link in the chain of Respiratory Protection”.



RPA



RESPIRATORY PROTECTIVE ASSESSMENT

The Fit Test Specialists

Tel: 0117 9837 867

www.face-fit.co.uk

enquiries@face-fit.co.uk

Competent Fit Test Operator Training

TSI Portacount



RPA are TSI Channel Partners and Portacount Training Partners for the UK. With over 10 years experience of Face Fit Testing we provide TSI-authorized training, technical backup and fit test consultancy services for Portacount users throughout the UK. All our trainers are experts in RPE Fit Testing and have a wealth of experience of practical fit testing with every type of mask.

Course Outline

Morning Session

Background to Face Fit Testing

Legislation and Guidance,
HSE282/28

Installation and Operation of
Equipment

Sampling from the Facepiece

Fit Test Protocols and Pass Levels

Set-up and Running Procedures

Afternoon Session

PRACTICAL FACE FIT TESTING

Troubleshooting & Problem Solving

Fit Test Failures and Re-Tests

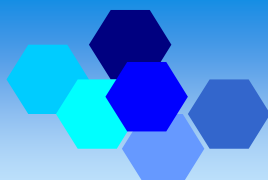
Planning & Managing a Fit Testing
Program

Data Handling and Storage

Competent TSI Portacount Fit Test Operator Training is a Full Day course aimed at those who require an in-depth knowledge of Face Fit Testing using the TSI PortaCount. This course covers the Competent Fit Test Operator criteria set out in HSE282/28 but also includes many additional practical elements including troubleshooting, how to plan and manage a fit test program and an advanced practical session.



RPA



RESPIRATORY PROTECTIVE ASSESSMENT

The Fit Test Specialists

Tel: 0117 9837 867

www.face-fit.co.uk

enquiries@face-fit.co.uk

Competent Fit Test Operator Training

Qualitative Fit Testing

Our Fit Testing Training Consultants have a wealth of practical experience of face fit testing which really makes a difference to the quality of our training courses. We are able to provide practical guidance, advice and helpful hints and tips all gained from a working practical knowledge of face fit testing with every make and model of mask from P1, P2 & P3 disposable masks through to half masks, full face masks and BA.



Competent Qualitative Fit Test Operator Training is a Full Day course aimed at those who require an in-depth knowledge of Face Fit Testing using Qualitative Fit Test Methods. This course covers the Competent Fit Test Operator criteria set out in HSE282/28 and also provides helpful practical tips and guidance.

Course Outline

Morning Session

Background to Face Fit Testing

Legislation and Guidance,
HSE282/28

Set-up of Equipment

The Sensitivity Test

Fit Test Protocols

Pass Levels

Afternoon Session

PRACTICAL FACE FIT TESTING

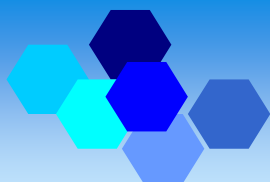
Troubleshooting & Problem Solving

Fit Test Failures and Re-Tests

Planning & Managing a Fit Testing
Program

Managing Data

RPA



RESPIRATORY PROTECTIVE ASSESSMENT

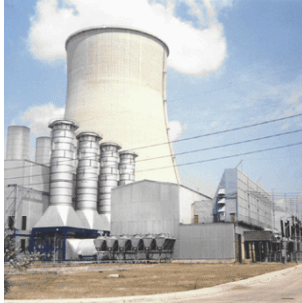
The Fit Test Specialists

Tel: 0117 9837 867

www.face-fit.co.uk

enquiries@face-fit.co.uk

RPA provide the complete range of RPE solutions



Face Fit Testing

Fit Test Operator Training



Call now or e-mail us at enquiries@face-fit.co.uk



PortaCount Sales & Support



RPE Training

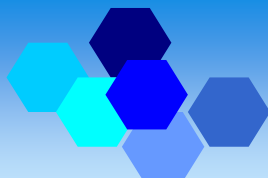


RPE Servicing



RPE Supplies

RPA



RESPIRATORY PROTECTIVE ASSESSMENT

The Fit Test Specialists

Tel: 0117 9837 867

www.face-fit.co.uk

enquiries@face-fit.co.uk